



S | P | R | U
SOCIAL POLICY RESEARCH UNIT

WELLCHI Network Final Conference

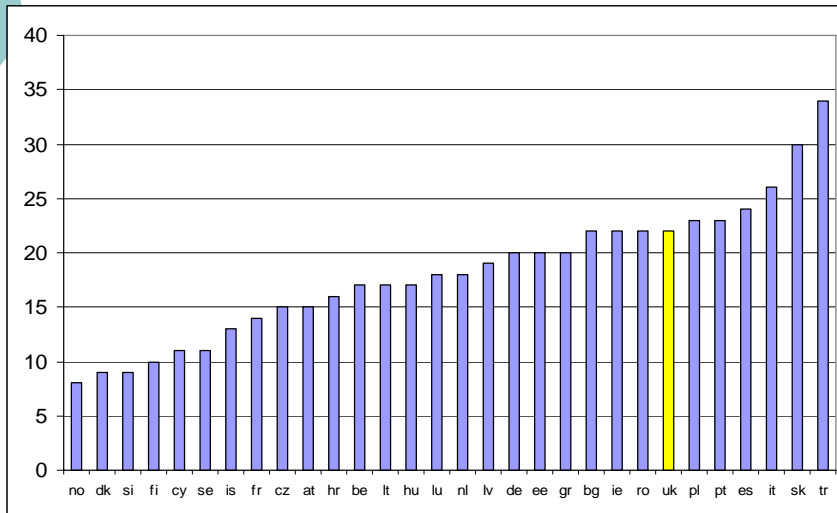
**Univesity Pompeu Fabra
Barcelona
8-10 February 2007**

BEYOND CHILD POVERTY Jonathan Bradshaw

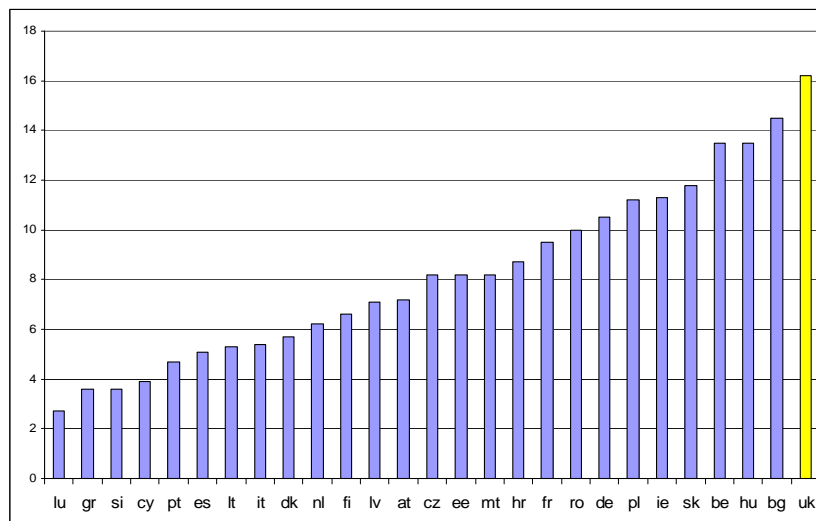
Background 1

- ◆ Second Wellchi conference in Hamburg
- ◆ My paper critical of EU because Laeken indicators only include two child indicators
 - ◆ Relative child poverty
 - ◆ Children in workless households

Child poverty rate (<60% median) 2003/4 (Eurostat 2007)



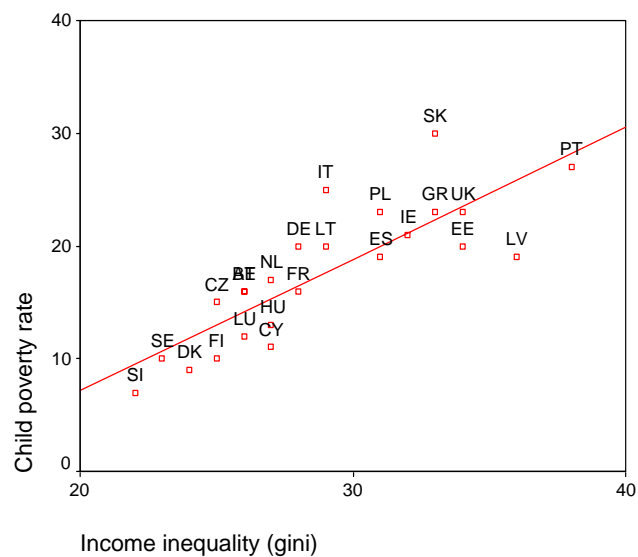
% children 0-17 living in workless households 2006. (Eurostat 2007)



Background 1

- ◆ At second Wellchi conference in Hamburg
- ◆ My paper critical of EU because Laeken indicators only include two child indicators
 - ◆ Relative child poverty
 - ◆ Children in workless households
- ◆ Argued they were
 - ◆ Too narrowly economic
 - ◆ Relative child poverty too relative – a measure of inequality

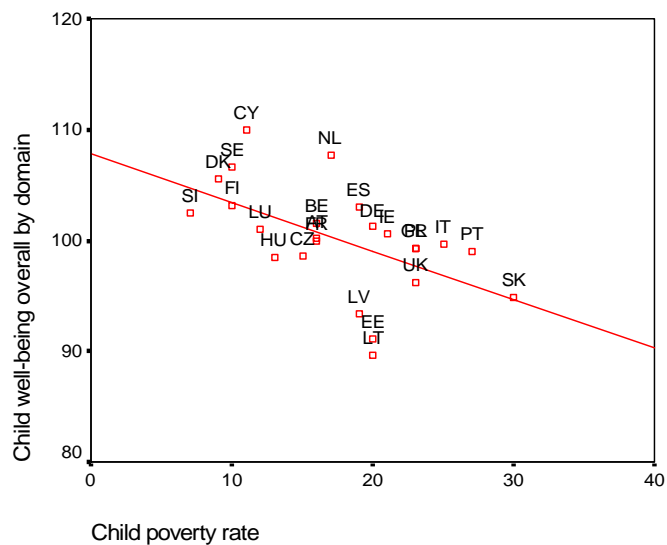
Child poverty and income inequality $r=0.82$



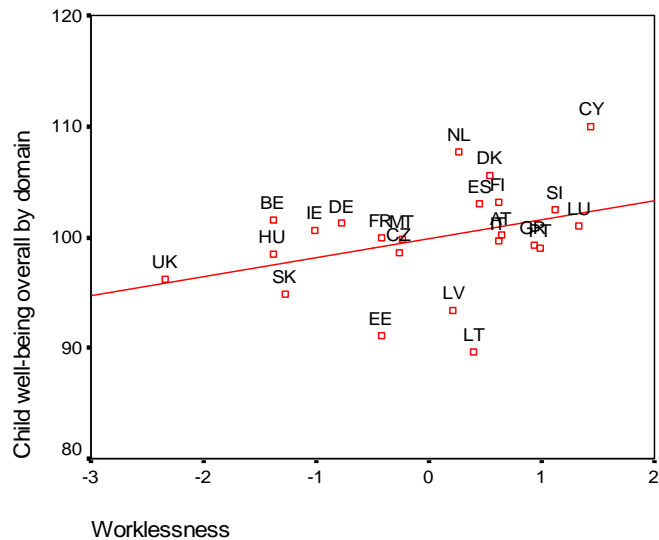
Background 1

- ◆ At second Wellchi conference in Hamburg
- ◆ My paper critical of EU because Laeken indicators only include two child indicators
 - ◆ Relative child poverty
 - ◆ Children in workless households
- ◆ Argued they were
 - ◆ Too narrowly economic
 - ◆ Relative child poverty too relative – a measure of inequality
 - ◆ Neither represents child well-being adequately

Child well-being by child poverty $r=-0.55$



Child well-being by % children in workless z scores $r=0.36ns$



Child well-being

- ◆ We have developed three indices of child wellbeing
 - ◆ In the EU 25 *Journal of Social Indicators Research* January 2007.
 - ◆ In the OECD UNICEF *Innocenti Report Card 7* published 14 February 2007.
 - ◆ In CEE/CIS countries for UNICEF Geneva and Richardson, Hoelscher and Bradshaw at this conference
- ◆ All slightly different
- ◆ EU now actively engaged in exploring child well-being
 - ◆ Atkinson report called for child mainstreaming
 - ◆ Social Protection Group Indicators Subcommittee has established
 - ◆ A task force on child well-being and child poverty – report September 2007
 - ◆ NAPs' experts devoted to child well-being in 2007
 - ◆ Portuguese Presidency priority



Our conceptualisation of child well-being

- ◆ Multi-dimensional approach
- ◆ Based on children's rights as outlined in the UN CRC
- ◆ Drawing on national and multi-national experiences in indicator development



Data Sources for EU: Surveys

- ◆ WHO Health Behaviour of School Aged Children (HBSC) 36 countries at 2001
- ◆ Programme for International Student Assessment (PISA) 32 countries at 2000, 41 at 2003
- ◆ European Social Survey (ESS) 22 countries at 2002
- ◆ Citizenship and Education Survey (CIVED) 28 countries at 1999 and EUYOUPART (2005)
- ◆ European School Survey Project on Alcohol and other Drugs (ESPAD) 35 countries at 2003
- ◆ European Quality of Life Survey (EQLS) 28 countries at 2003



Data Sources for EU: Series

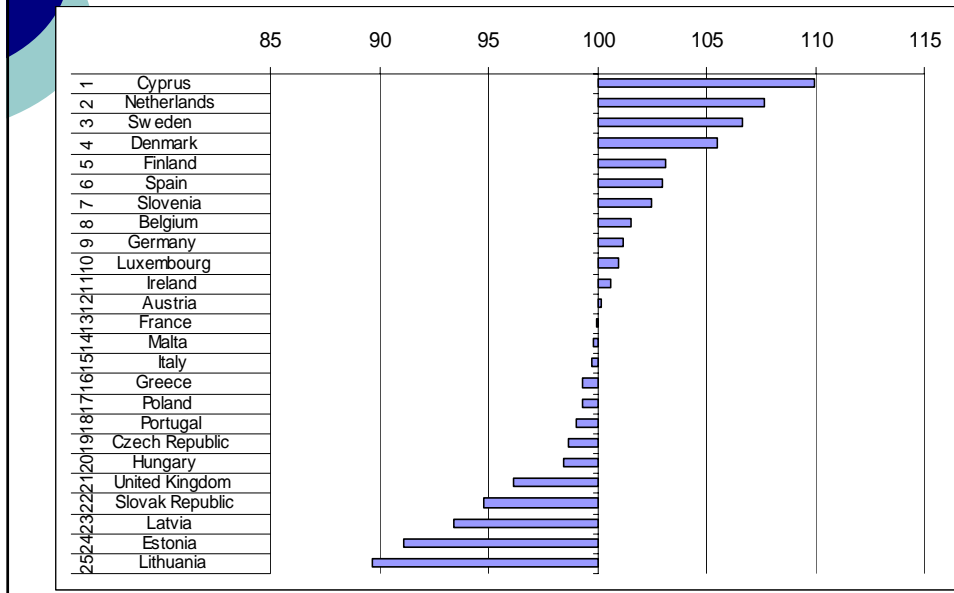
- ◆ WHO mortality data base 1993-1999, all countries except DK & CY
- ◆ World Bank World Development Indicators 2003, all countries
- ◆ OECD (2004) Education at a Glance, 2002 data
- ◆ Eurostat (2003) Population and Social Conditions
- ◆ Eurostat (2004) Labour Force Survey
- ◆ World Bank (2002) Health, Nutrition and Population Data



Structure

- ◆ 51 variables organised into
- ◆ 23 domains making
- ◆ 8 clusters
 - ◆ Material situation
 - ◆ Housing
 - ◆ Health
 - ◆ Subjective well-being
 - ◆ Education
 - ◆ Children's relationships
 - ◆ Civic Participation
 - ◆ Risk and safety

Overall child well-being



Country	AVERAGE RANK	Well-being Dimensions								
		HEALTH	SUBJECTIVE WELL-BEING	CHILDRENS RELATION-SHIPS	MATERIAL	RISK AND SAFETY	EDUCATION	CIVIC PARTICIPATION	HOUSING	
Cyprus	4.6	5	1	5	10	2	6	1	14	
Netherlands	5.1	2	1	5	10	5	6	14	7	
Sweden	5.8	1	6	15	2	3	2	14	3	
Denmark	6.5	3	9	10	6	15	3	4	2	
Spain	8.9	13	3	9	8	1	15	13	13	
Finland	9.8	7	12	17	3	7	4	18	10	
Germany	10.0	10	7	12	12	12	9	10	8	
Slovenia	10.4	15	8	3	4	18	13	12	12	
Belgium	10.8	20	15	6	18	16	1	5	5	
Ireland	12.4	19	5	8	19	20	7	9	9	
Greece	12.5	25	4	11	17	8	16	2	17	
Italy	12.5	16	11	4	15	6	19	11	18	
Austria	12.6	21	2	16	7	19	17	6	6	
Luxembourg	12.6	11	20	19	5	9	20	4	4	
Hungary	12.9	22	10	7	14	14	12	3	21	
Poland	12.9	6	19	13	23	11	5	6	20	
France	13.0	14	13	14	11	10	14	15	15	
Portugal	13.0	9	16	2	13	17	18	7	22	
Malta	13.5	24	17	1	24	4	11	11	11	
Czech Republic	14.1	4	14	22	9	21	10	17	16	
United Kingdom	16.0	23	18	23	20	22	13	8	1	
Slovak Republic	16.6	17	22	25	25	13	11	9	19	
Latvia	17.5	18	21	18	16	23	8	12	24	
Estonia	19.9	12	23	21	21	24	15	23	23	
Lithuania	20.0	8	24	20	22	25	16	25	25	



Search for a summary measure

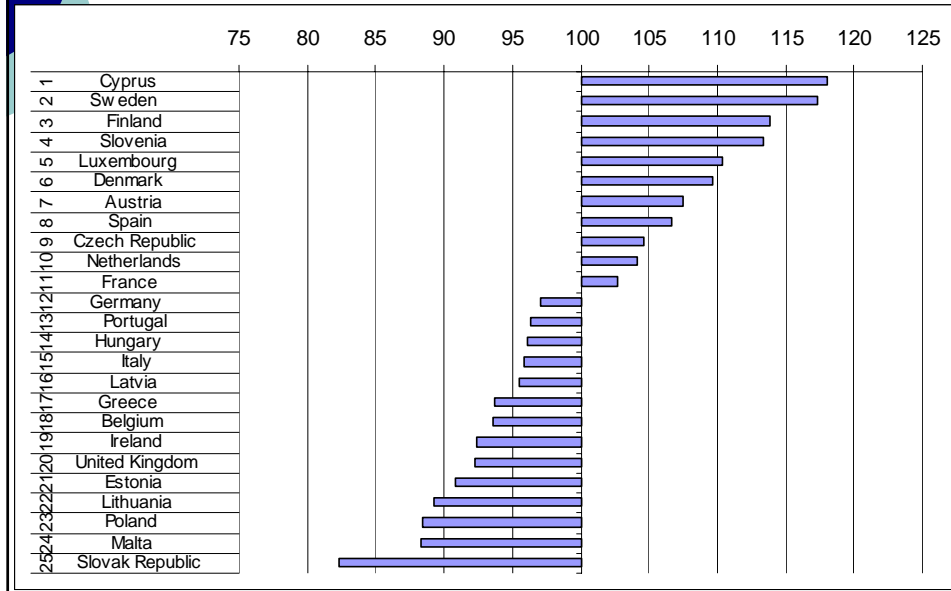
- ◆ Material well-being is better than child poverty



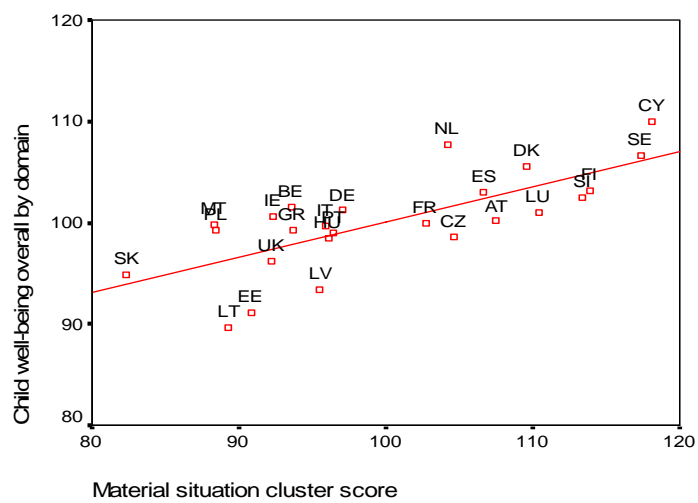
Material situation

- ◆ Relative child income poverty
 - ◆ Child poverty rate
 - ◆ Child poverty gaps
- ◆ Child deprivation
 - ◆ Lacking car, own bedroom, holidays last year, a computer
 - ◆ Lacking a desk, quiet for study, a computer, calculator, dictionary, text books
 - ◆ Less than ten books in the home
- ◆ Parental worklessness.

Material situation



Overall well-being and material well-being. $r=0.73$



Search for a summary measure

- ◆ Material well-being is better than child poverty
- ◆ Different domains have varying relationship to child well-being

Correlation between domains and overall well-being

Subjective	0.83
Risk and safety	0.79
Material situation	0.73
Housing and environment	0.65
Children's peers relations	0.47
Education	0.47
Civic participation	0.45
Health	0.40

Search for a summary measure

- ◆ Material well-being is better than child poverty
- ◆ Different domains have varying relationship to child well-being
- ◆ And to each other

Correlation matrix of domains. Not sig.

	Health	Subj.	Peers	Mater.	Risk	Civic	Hsing.	Educ.
Health	1.0	0.0	-0.1	0.5	0.2	-0.2	0.0	0.5
Subj.		1.0	0.5	0.5	0.6	0.3	0.6	0.1
Peers			1.0	0.0	0.5	0.3	0.0	0.0
Mater.				1.0	0.4	0.2	0.4	0.2
Risk					1.0	0.4	0.5	0.0
Civic						1.0	0.1	-0.3
Hsing.							1.0	0.3
Educ.								1.0



Summary

- ◆ Civic participation not related to any other cluster
- ◆ Education only associated with health
- ◆ Health also associated with material situation (only)
- ◆ Subjective well-being and risk and safety associated with five other clusters

- ◆ Are they the ones to go for?



Search for a summary measure

- ◆ Material well-being is better than child poverty
- ◆ Different domains have varying relationship to child well-being
- ◆ And to each other
- ◆ Perhaps subjective well-being or risk and safety could represent well-being
- ◆ But they are very complicated and rely on out of date survey evidence

Subjective Well-being

◆ Personal well-being

- ◆ Young people with scores above the middle of a life satisfaction scale 11, 13 and 15 years (%) - HBSC 2001/02
- ◆ Students who agree or strongly agree to 'I feel like an outsider (or left out of things)', 15 years (%) - PISA 2003
- ◆ Students who agree or strongly agree to 'I feel awkward and out of place', 15 years (%) - PISA 2003
- ◆ Students who agree or strongly agree to 'I feel lonely', 15 years (%) - PISA 2003

◆ Well-being at school

- ◆ Young people feeling pressured by schoolwork 11, 13 and 15 years (%) - HBSC 2001/02
- ◆ Young people liking school a lot 11, 13 and 15 years (%) - HBSC 2001/02

◆ Self defined health

- ◆ Young people rating their health as fair or poor 11, 13 and 15 years (%) - HBSC 2001/02

Risk and Safety

◆ Risk & Safety

- ◆ Young people who were involved in physical fighting at least once in the previous 12 months 11, 13 and 15 years (%) - HBSC 2001/02
- ◆ Young people who were bullied at least once in the previous couple of months 11, 13 and 15 years (%) - HBSC 2001/02

◆ Child deaths

- ◆ All child deaths: All under 19 deaths per 100,000 children, WHO mortality database, 3 year averages, MRD

◆ Risk behaviour

- ◆ Teenage pregnancy (adolescent fertility rate), adolescent fertility rate, births per 1000 women 15-19 - WDI, 2003.
- ◆ Young people who have had sexual intercourse, 15 years (%) - HBSC 2001/02
- ◆ Young people who used a condom during their last sexual intercourse, 15-year-olds (%) - HBSC 2001/02
- ◆ Cigarette smoking: Lifetime use 40 times or more 16 years (%) - ESPAD, 2003
- ◆ Drunkenness: Lifetime 20 times or more 16 years (%) - ESPAD, 2003
- ◆ Cannabis: Experience of use in Lifetime 16 years (%) - ESPAD, 2003
- ◆ Inhalants: Experience of use in Lifetime 16 years (%) - ESPAD, 2003

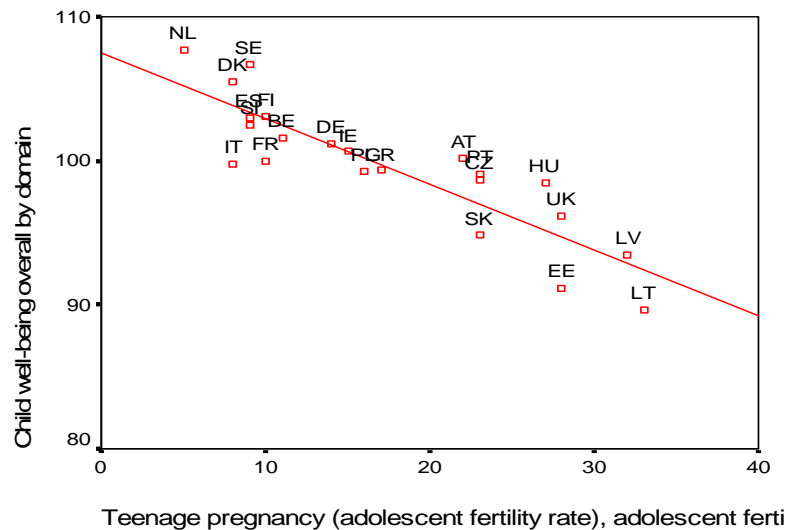
Search for a summary measure

- ◆ Material well-being is better than child poverty
- ◆ Different domains have varying relationship to child well-being
- ◆ And to each other
- ◆ Perhaps subjective well-being or risk and safety could represent well-being
- ◆ But they are very complicated and rely on out of date survey evidence
- ◆ What about single indicators?

Best match between single indicators and overall wellbeing

Indicator	Correlation coefficient r
Teenage fertility rate	0.88***
Feeling unsafe in neighbourhood	0.82***
Life satisfaction score	0.81***
Low family affluence (deprivation)	0.78***
Infant mortality rate	0.74***
Under 19 mortality rate	0.67***
Bullied last month	0.67**
Self rated health	0.64**
At least two household problems	0.63**
Low educational possessions	0.60**
Peers kind and helpful	0.61**

Child well-being and teenage fertility rate $r=0.88^{***}$



Search for a summary measure

- ◆ Material well-being is better than child poverty
- ◆ Different domains have varying relationship to child well-being
- ◆ And to each other
- ◆ Perhaps subjective well-being or risk and safety could represent well-being
- ◆ But they are very complicated and rely on out of date survey evidence
- ◆ What about single indicators?
- ◆ What about selected indicators representing domains

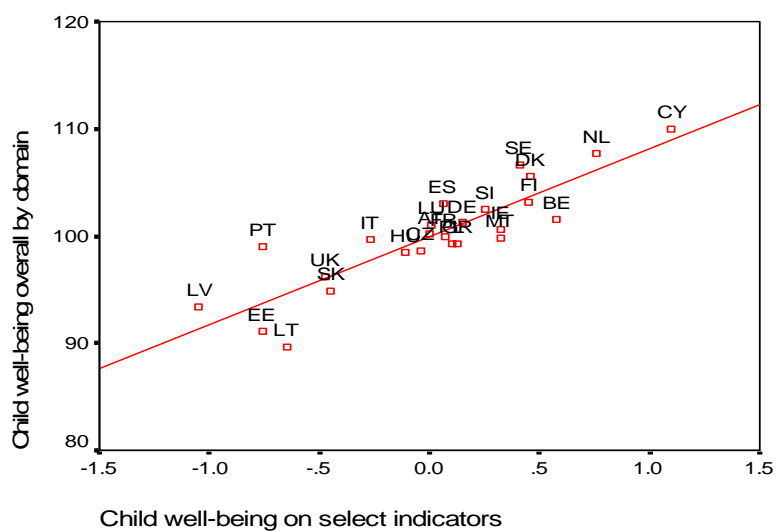
Health Cluster

	<i>N</i>	<i>Correlation coefficient</i>	<i>p value</i>
Mortality rate, infant (per 1,000 live births) - WDI, 2003	25	-0.212	0.308
Low birth weight, as a percentage of total live births lower than 2500g - OECD Health data, MRD	24	-0.577	0.003
Immunization, measles (% of children ages 12-23 months) - WDI, 2003	25	0.482	0.015
Child immunization rate, DPT3 (% of children ages 12-23 months) - WDI HNP, 2002.	25	0.574	0.003
Child immunization rate, Pol3 (% of children ages 12-23 months) - WDI HNP, 2002.	25	0.552	0.004
Young people who brush their teeth more than once a day 11, 13 and 15 years (%) - HBSC 2001/02	22	0.418	0.053
Young people who eat fruit every day, 11, 13 and 15 years (%) - HBSC 2001/02	22	-0.103	0.647
Young people who eat breakfast every school day 11, 13 and 15 years (%) - HBSC 2001/02	22	0.517	0.014
Mean number of days when young people are physically active for one hour or more average of previous week and typical week 11, 13 and 15 years (%) - HBSC 2001/02	22	0.124	0.583
Young people who are overweight according to BMI, 13 and 15-year-olds (%) - HBSC 2001/02	22	-0.503	0.017

Single indicators with highest correlation with cluster score

Cluster	Indicator	Corr. with cluster	sig.	Corr. with overall well-being	sig.	n
Health	Low birth weight,	-0.58	0.003	0.06	0.764	24
Subjective	Young people with scores above the middle of a life satisfaction scale	0.88	0.000	0.81	0.000	22
Relationships	Young people living in 'single parent' family structures	-0.75	0.000	-0.25	0.256	22
Material	At risk of poverty rate	-0.83	0.000	-0.55	0.006	24
Risk&safety	All under 19 deaths per 100,000 children,	-0.81	0.000	-0.67	0.000	23
Education	Participation rates 15-19	0.73	0.000	0.35	0.141	19
Civic	Political interest	0.86	0.000	0.24	0.328	18
Housing	Households with children reporting at least two household problems -	-0.89	0.000	-0.63	0.001	25

Child well-being by domain and selected indicators



Comparison of ranking by domain and selected indicators

Well-being by domain	Well-being by selected indicators
CY	CY
NL	NL
SE	BE
DK	DK
FI	FI
ES	SE
SI	IE
BE	MT
DE	SI
LU	DE
IE	GR
AT	PL
FR	FR
MT	ES
IT	LU
GR	AT
PL	CZ
PT	HU
CZ	IT
HU	SK
UK	UK
SK	LT
LV	EE
EE	PT
LT	LV



Conclusion

- ◆ Our index first attempt
- ◆ Academic - probably too complex for the EU
- ◆ Explored scope for a simpler index
- ◆ Domains more important than overall ranking
- ◆ They get closer to why questions and thus policy

- ◆ SILC will help – but not much
- ◆ Euroqual, ESS, PISA have potential
- ◆ HBSC too slow
- ◆ Need a new EU survey of children

This is work in progress!

Any comments welcome...