

3rd International Conference of the WELLCHI Network

“How can the well-being of children in a knowledge-based society be ameliorated? Convergence and divergence patterns in a European perspective”

Barcelona February 9th 2007

Migrant Student Population in Secondary Education: Shedding some light on their presence in the two biggest urban conurbations (Athens - Thessalonica)

**Dr Giorgos Mavrommatis, Triantafyllia Avramidi
Hellenic Migration Policy Institute (IMEPO)**

The two biggest urban conurbations:

- Attica Region,
- Prefecture of Thessalonica

Aims:

- to examine patterns of migrant student's concentration,
- their countries of origin,
- their length of stay in Greece.

Region of Attica

**Table 1: Total Students & Migrant Students in Gymnasiums,
Attica Region
(School Year 2004 - 2005)**

School Districts	Total number of students	Total number of migrant students	Migrant students as a percentage of the total number of Students
A' Athens	26.926	6.096	22.6%
B' Athens	18.965	1.440	7.6%
C' Athens	16.217	1.293	8.0%
D' Athens	13.996	1.480	10.6%
Piraeus	13.662	1.879	13.8%
West Attica	5.302	529	10.0%
East Attica	12.694	1.367	10.8%
Total	107.762	14.084	13.1%

Source: IMEPO

**Table 2: Total Students & Migrant Students in Lyceums,
Attica Region
(School Year 2004 - 2005)**

School Districts	Total number of students	Total number of migrant students	Migrant students as a percentage of the total number of Students
A' Athens	20.035	2.140	10.7%
B' Athens	16.753	496	3.0%
C' Athens	11.832	405	3.4%
D' Athens	10.804	621	5.7%
Piraeus	12.495	604	4.8%
West Attica	2.878	118	4.1%
East Attica	8.685	465	5.4%
Total	83.482	4.849	5.8%

Source: IMEPO

**Table 3: Total Students & Migrant Students in TEEs,
Attica Region
(School Year 2004 - 2005)**

School Districts	Total number of students	Total number of migrant students	% Migrant students to the total number of migrant students
A' Athens	9064	1.787	19.7%
B' Athens	2920	524	17.9%
C' Athens	7099	566	8.0%
D' Athens	2469	621	25.2%
Piraeus	6770	523	7.7%
West Attica	2044	151	7.4%
East Attica	3534	317	9.0%
Total	33900	4.489	13.2%

Source: IMEPO

**Table 4: Total number of Migrant Students in Lyceums,
Attica Region
(School Year 2004 - 2005)**

School Districts	Total number of migrant students	% Migrant students to the total number of migrant students
A' Athens	2.140	44.1%
B' Athens	496	10.2%
C' Athens	405	8.4%
D' Athens	621	12.8%
Piraeus	604	12.5%
West Attica	118	2.4%
East Attica	465	9.6%
Total	4.849	100.0%

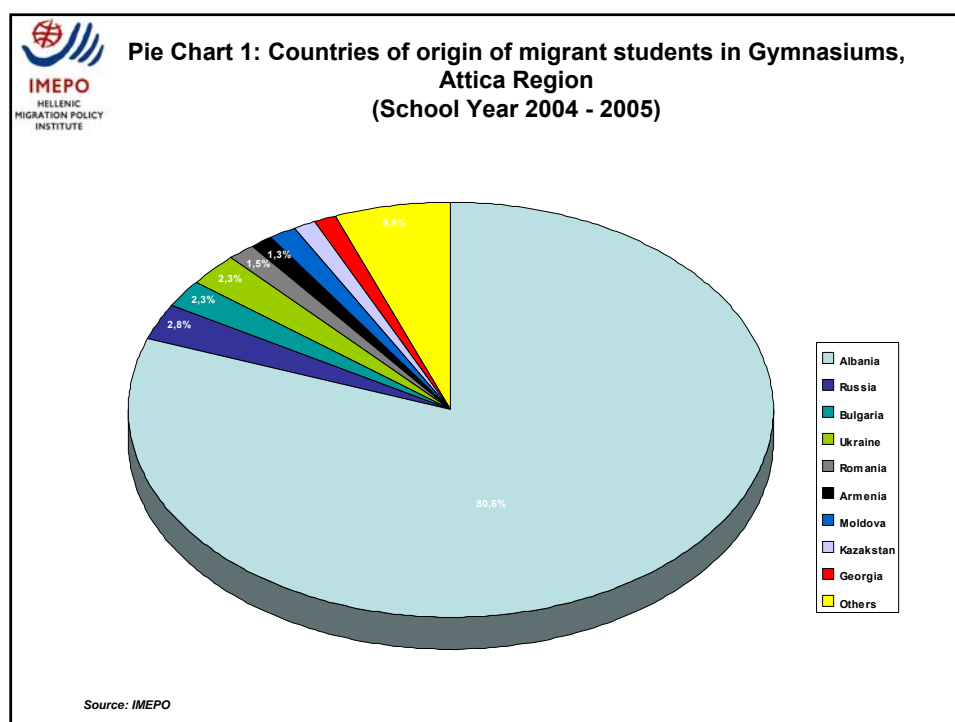
Source: IMEPO

IMEPO
HELLENIC
MIGRATION POLICY
INSTITUTE

**Table 4: Total number of Migrant Students in TEEs,
Attica Region
(School Year 2004 - 2005)**

School Districts	Total number of migrant students	% Migrant students to the total number of migrant students
A' Athens	1.787	39.8%
B' Athens	524	11.7%
C' Athens	566	12.6%
D' Athens	621	13.8%
Piraeus	523	11.7%
West Attica	151	3.4%
East Attica	317	7.1%
Total	4.489	100.0%

Source: IMEPO



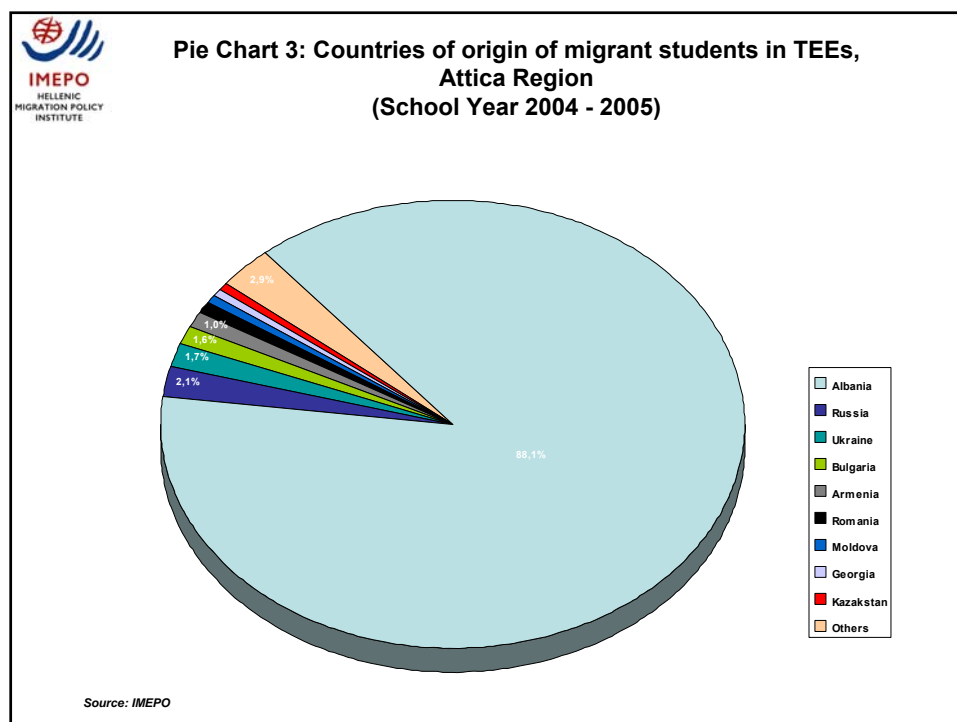
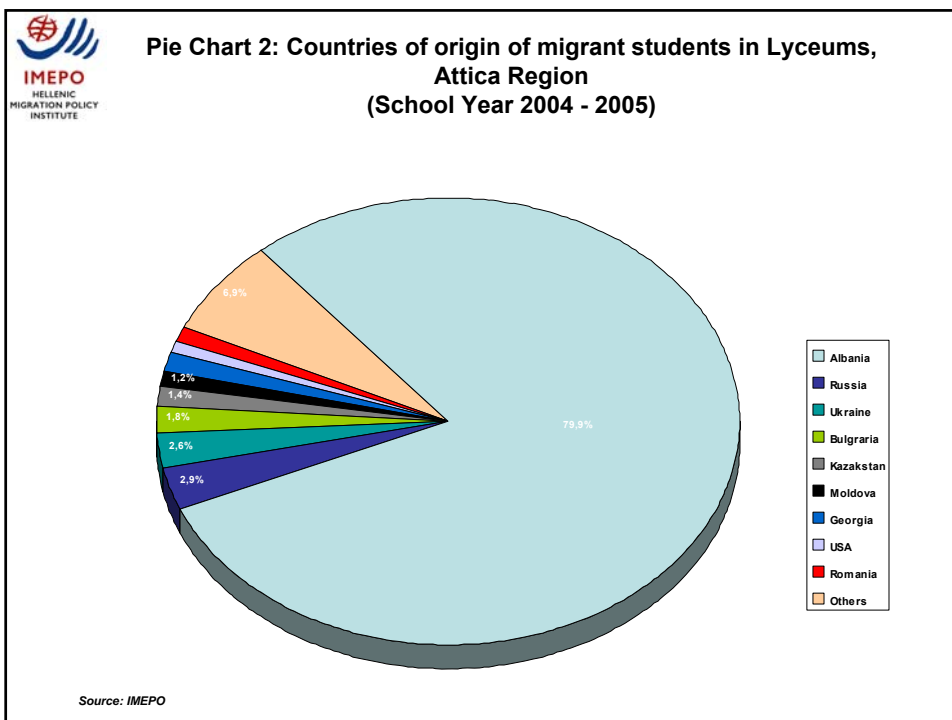
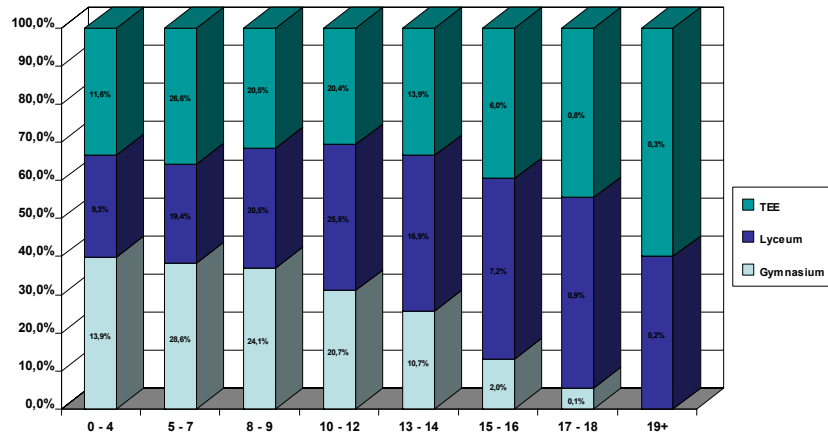


Figure 1: Length of stay of migrant students, in Gymnasiums, Lyceums & TEEs, Attica Region (School Year 2004 - 2005)



Source: IMEPO

Prefecture of Thessalonica

**Table 6: Total Students and Migrant Students in gymnasium,
Prefecture of Thessalonica
(School Year 2005 - 2006)**

School Districts	Total number of students	Total number of migrant students	Migrant students as a percentage of the total number of Students
East Thessalonica	15.553	1.521	9.8%
West Thessalonica	15.638	1.124	7.2%
Total	31.191	2.645	8.5%

Source: IMEPO

**Table 7: Total Students and Migrant Students in lyceum,
Prefecture of Thessalonica
(School Year 2005 - 2006)**

School Districts	Total number of students	Total number of migrant students	Migrant students as a percentage of the total number of Students
East Thessalonica	13.456	536	4.0%
West Thessalonica	10.783	285	2.6%
Total	24.239	821	3.4%

Source: IMEPO

**Table 8: Total Students and Migrant Students in TEE,
Prefecture of Thessalonica
(School Year 2005 - 2006)**

School Districts	Total number of students	Total number of migrant students	Migrant students as a percentage of the total number of Students
East Thessalonica	5.412	575	10.6%
West Thessalonica	4.661	337	7.2%
Total	10.073	912	9.1%

Source: IMEPO

**Table 9: Total number of Migrant Students in gymnasium, Prefecture
of Thessalonica
(School Year 2005 - 2006)**

School Districts	Total number of migrant students	% Migrant students to the total number of migrant students
East Thessalonica	1.521	57.5%
West Thessalonica	1.124	42.5%
Total	2.645	100.0%

Source: IMEPO

**Table 10: Total number of Migrant Students in lyceum,
Prefecture of Thessalonica
(School Year 2005 - 2006)**

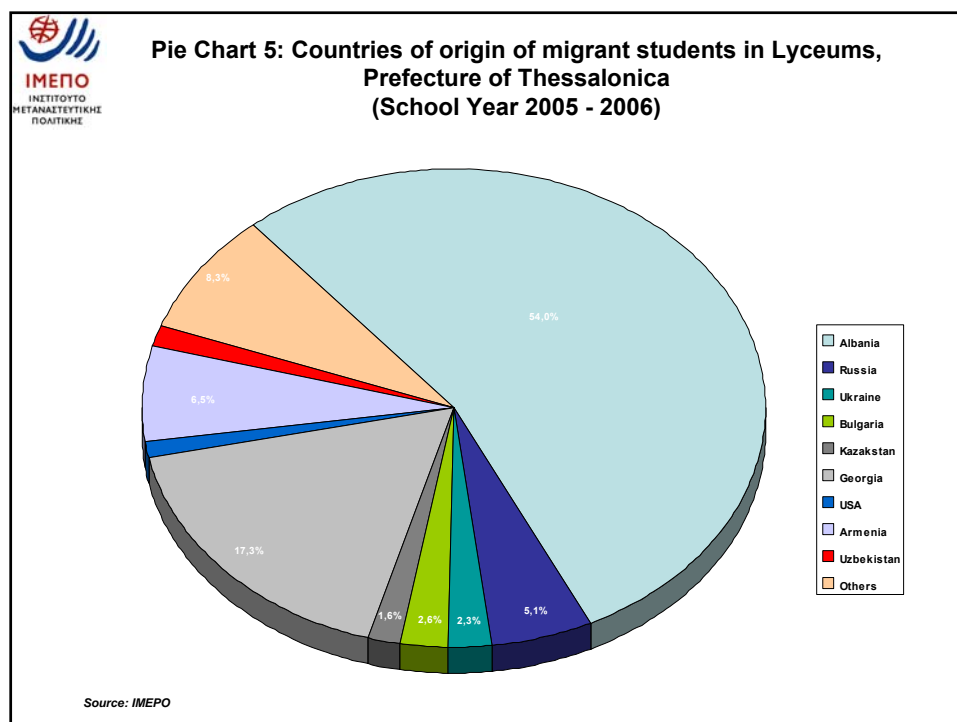
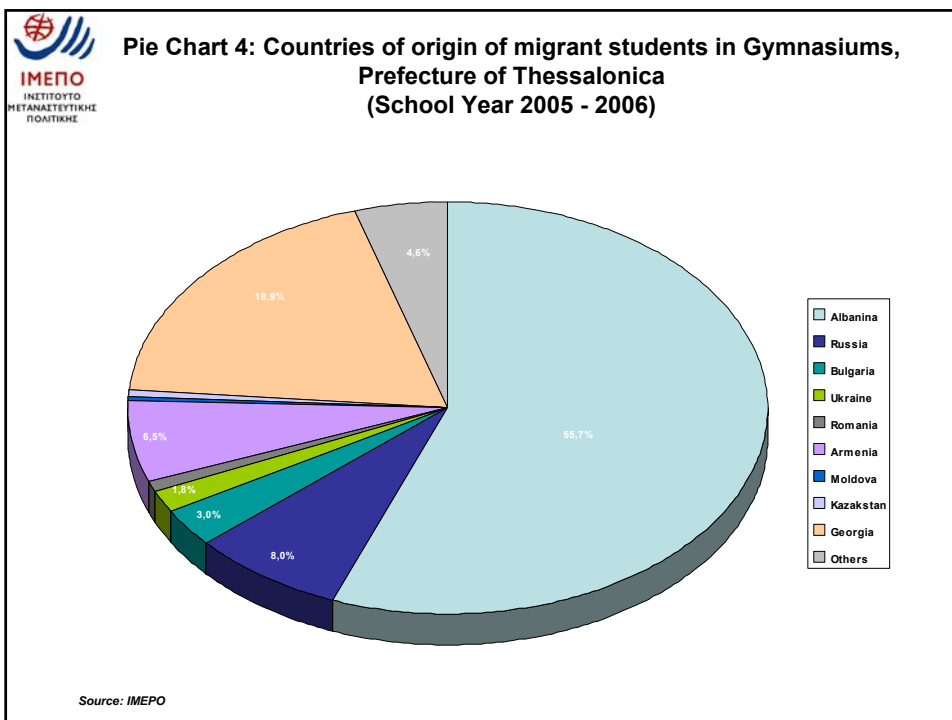
School Districts	Total number of migrant students	% Migrant students to the total number of migrant students
East Thessalonica	536	65.3%
West Thessalonica	285	34.7%
Total	821	100.0%

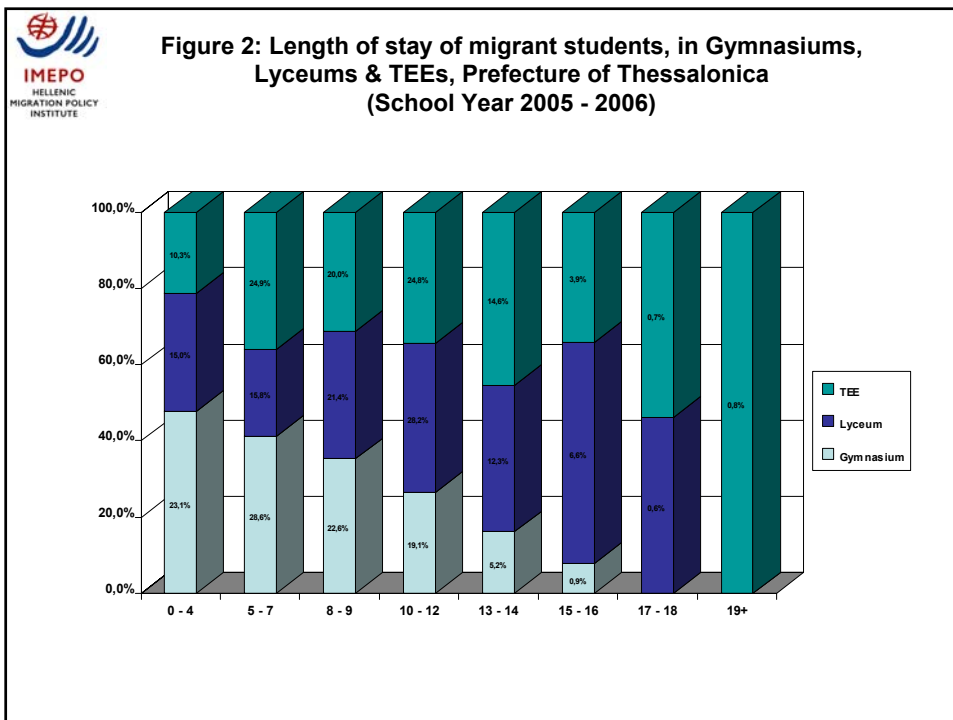
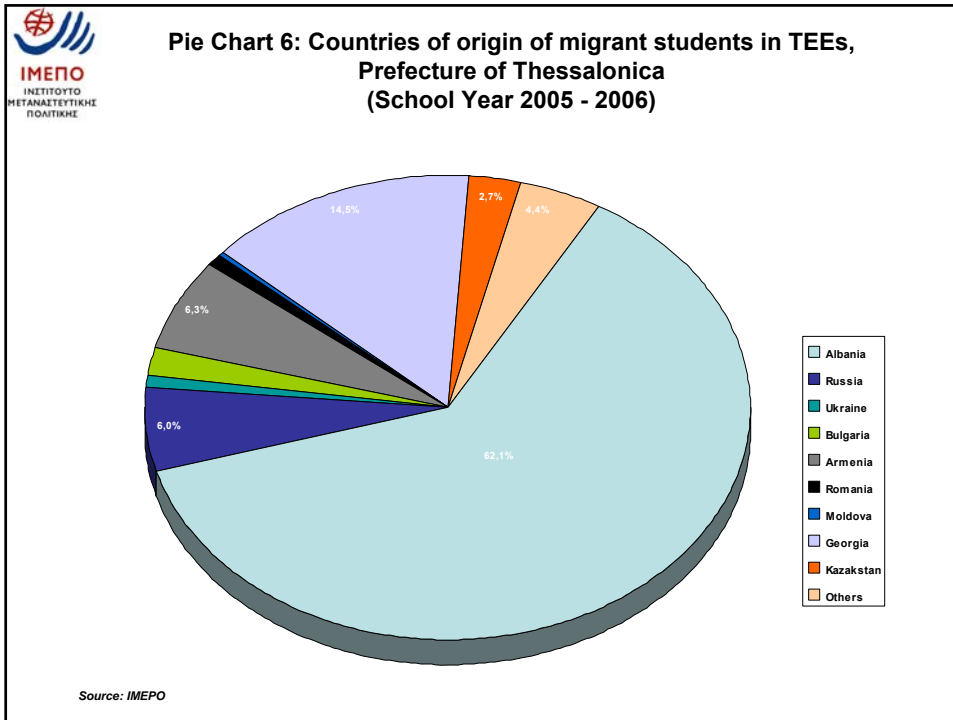
Source: IMEPO

**Table 11: Total number of Migrant Students in TEE,
Prefecture of Thessalonica
(School Year 2005 - 2006)**

School Districts	Total number of migrant students	% Migrant students to the total number of migrant students
East Thessalonica	575	63.0%
West Thessalonica	337	37.0%
Total	912	100.0%

Source: IMEPO





Instead of Conclusions