



Child Benefit in Spain 1990-2005

Sandra Obiol Francés
University of València

Final Conference of the Wellchi Network
Barcelona, 10th February 2007



Child Benefit System in Spain

- Distorting familial character of the Child Benefit
 - Including adults with serious disablement
 - Including means-test

Main characteristics

- Law 26/1990 of 20th December
Law of Non Contribution Allowances
(Ley de Prestaciones No Contributivas)

Universal Measure  Targeted Measure

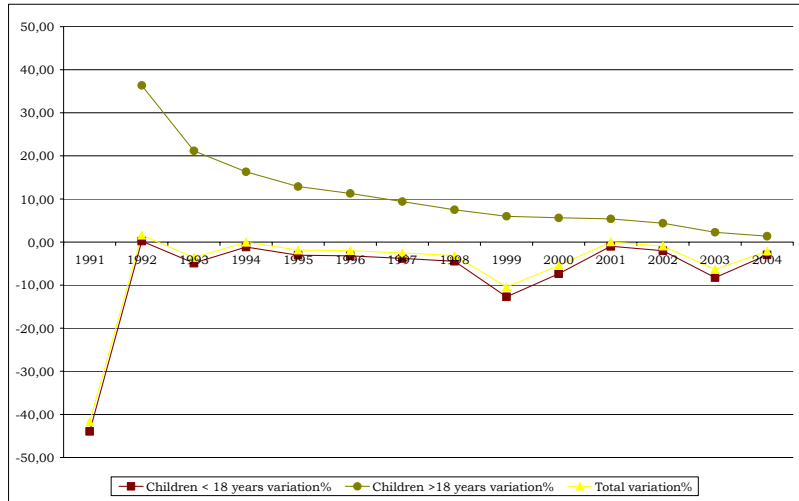
Child Benefit System.

Beneficiaries

- Non-disabled children under 18 years of age. Family income test (8.793,03€ in 2005).
- Persons with a degree of disability at least 33%, excluded from means-test:
 - Under 18 years with a degree of disability at least 33%
 - Over 18 years of age with a degree of disability at least 65%
 - Over 18 years of age with a degree of disability at least 75%

Introducing disabled adults

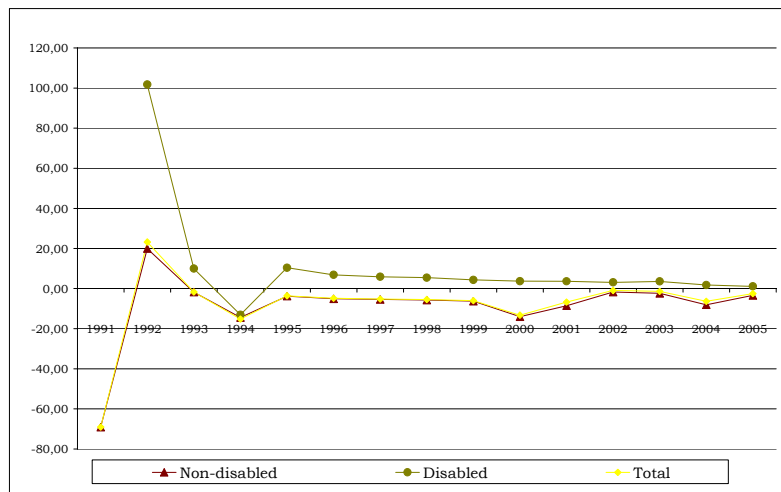
Beneficiary families according to the children's age. Spain, 1991-2005.
% variation.



Source: Own elaboration using INSS data (1991-2005).

Introducing disabled adults

Children according to the degree of disability. Spain, 1991-2005.
% variation



Source: Own elaboration using INSS data (1991-2005).

Introducing means-test

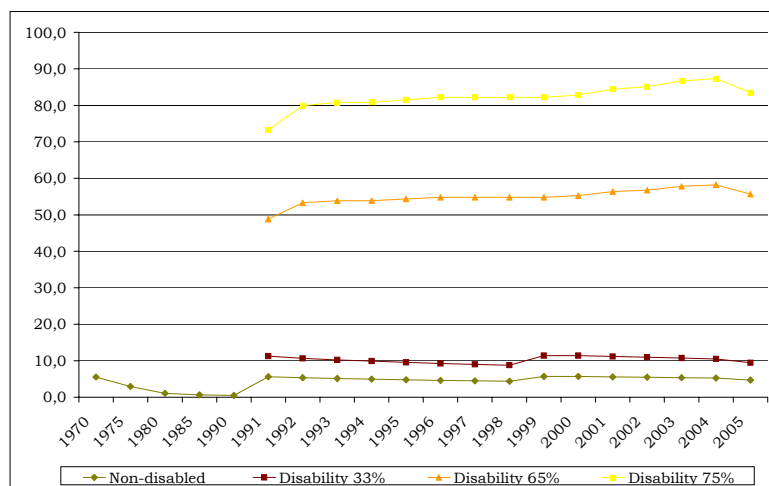
Child Benefit amounts. Spain, 2005

	Yearly	Monthly
1. Children under 18		
- non disabled	291,00	24,3
- degree of disability $\geq 33\%$	581,66	48,5
2. Children over 18		
- degree of disability $\geq 65\%$	3.427,68	285,6
- degree of disability $\geq 75\%$	5.141,52	428,5

Source: Anuario de Estadísticas Laborales, 2005.

Introducing means-test

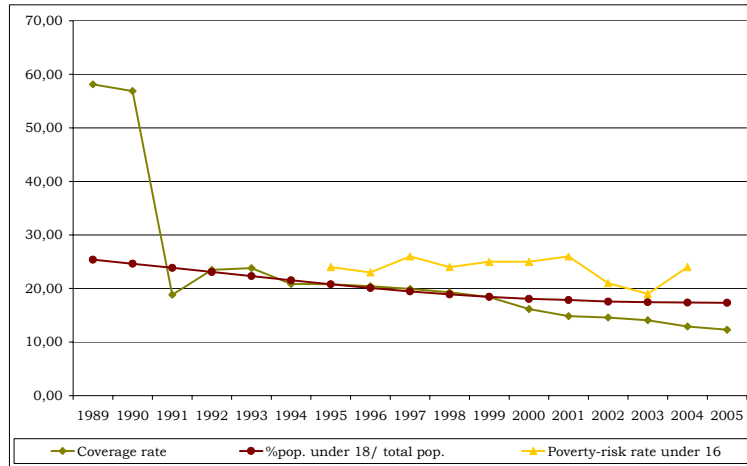
Amounts of the Child Benefit per month with respect to SMI. Spain, 1970-2005



Source: Own elaboration using INSS data (1991-2005).

Introducing means-test

Child benefit coverage rate, % of the population under 18 years with respect of total population and child poverty-risk-rate. Spain, 1989-2005



Source: Own elaboration using INSS data (1991-2005).