

Change of family structures
and informal care work
Lluís Flaquer and Lara Navarro
Sociology Department
Universitat Autònoma de Barcelona

WELLCHI Workshop 3: Working
flexibility and caring arrangements
Ecole nationale de la santé publique,
Rennes, 1st-2nd of September 2005

Main goals of this paper

- Explore the relationships between types of family and the nature of informal care work
- A vision from the south, emphasising certain characteristics of the Mediterranean family model that sometimes are misunderstood or overlooked.

Average number of persons per household European Union, 1981-1998

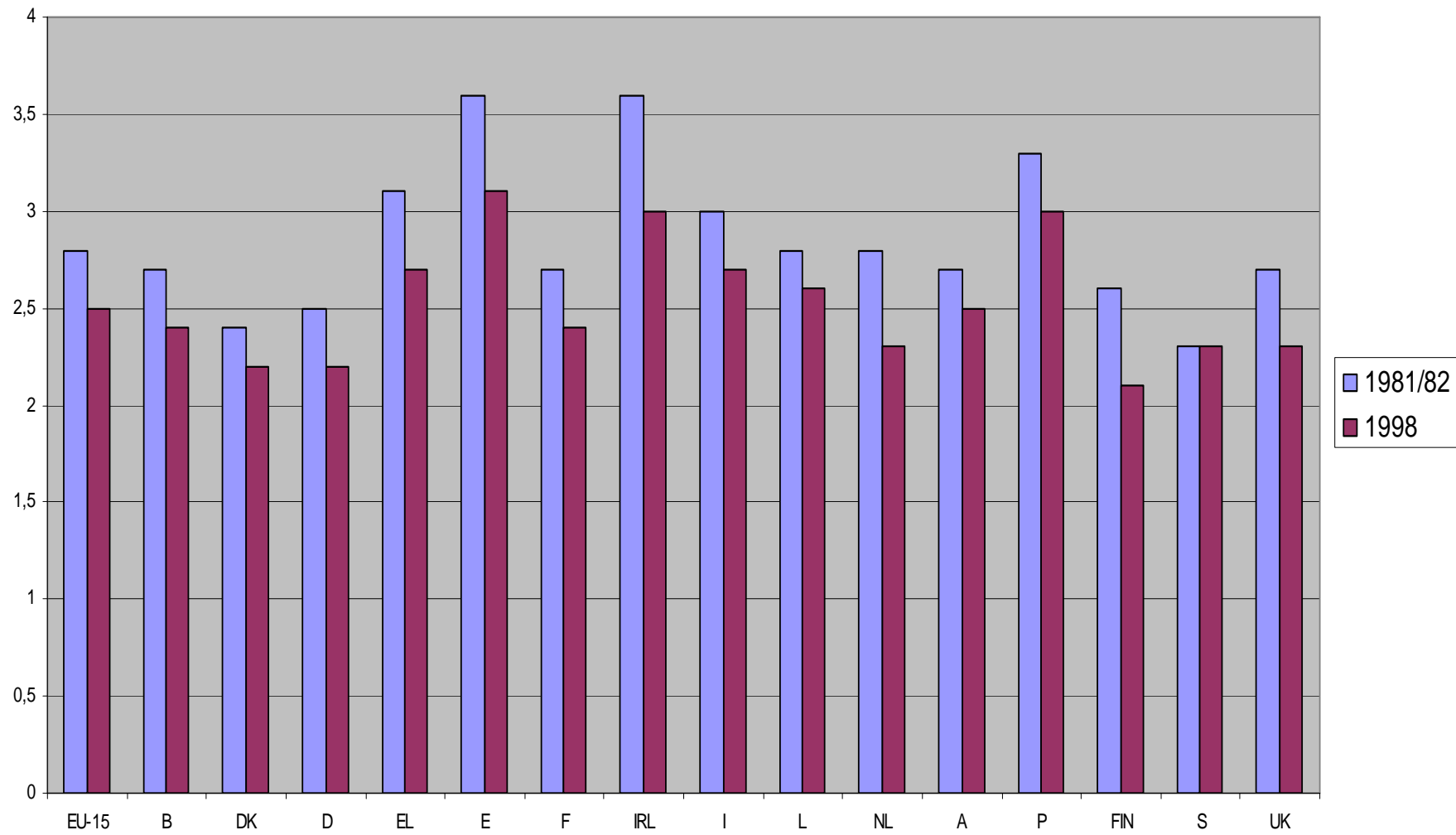
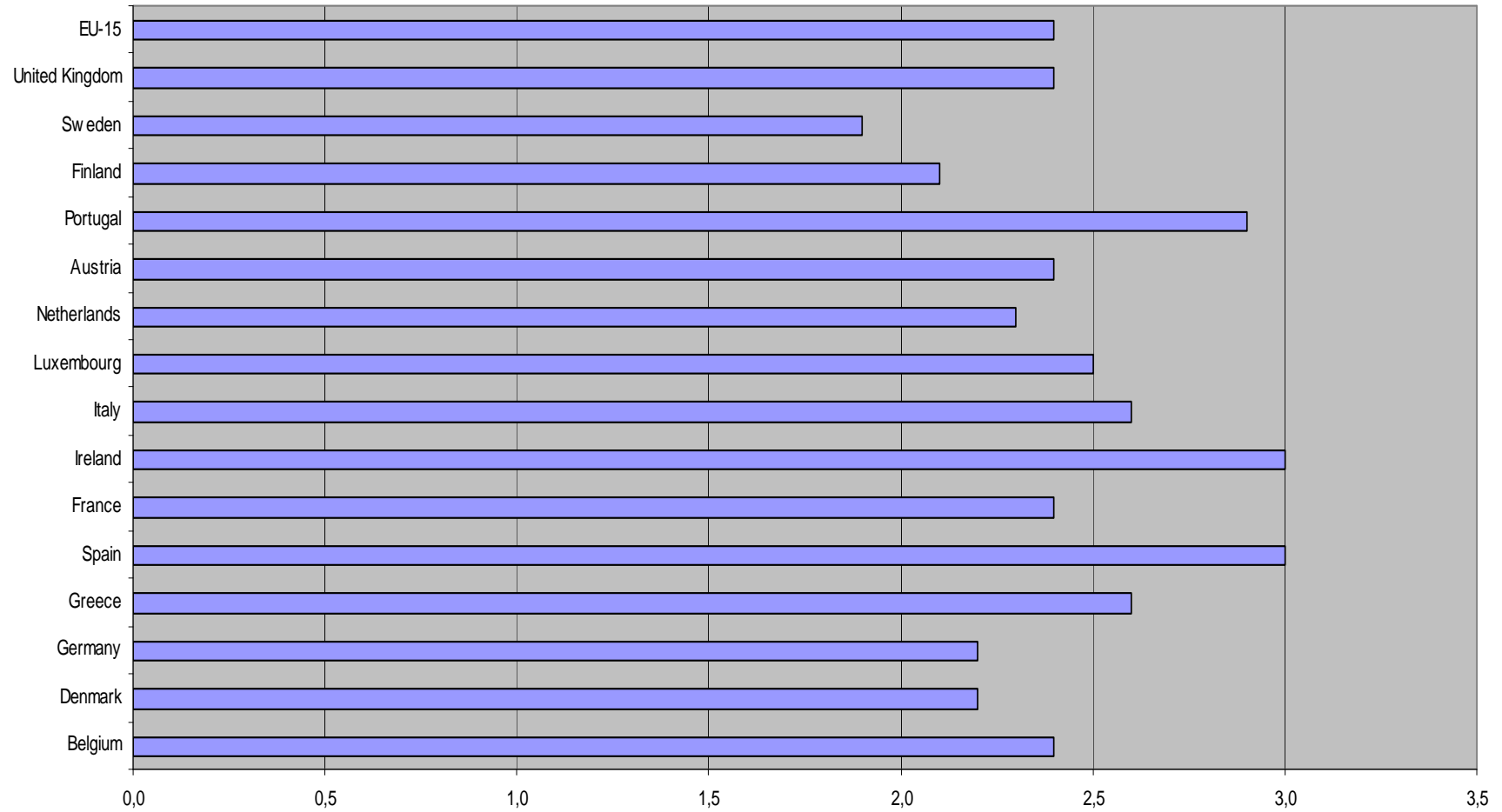
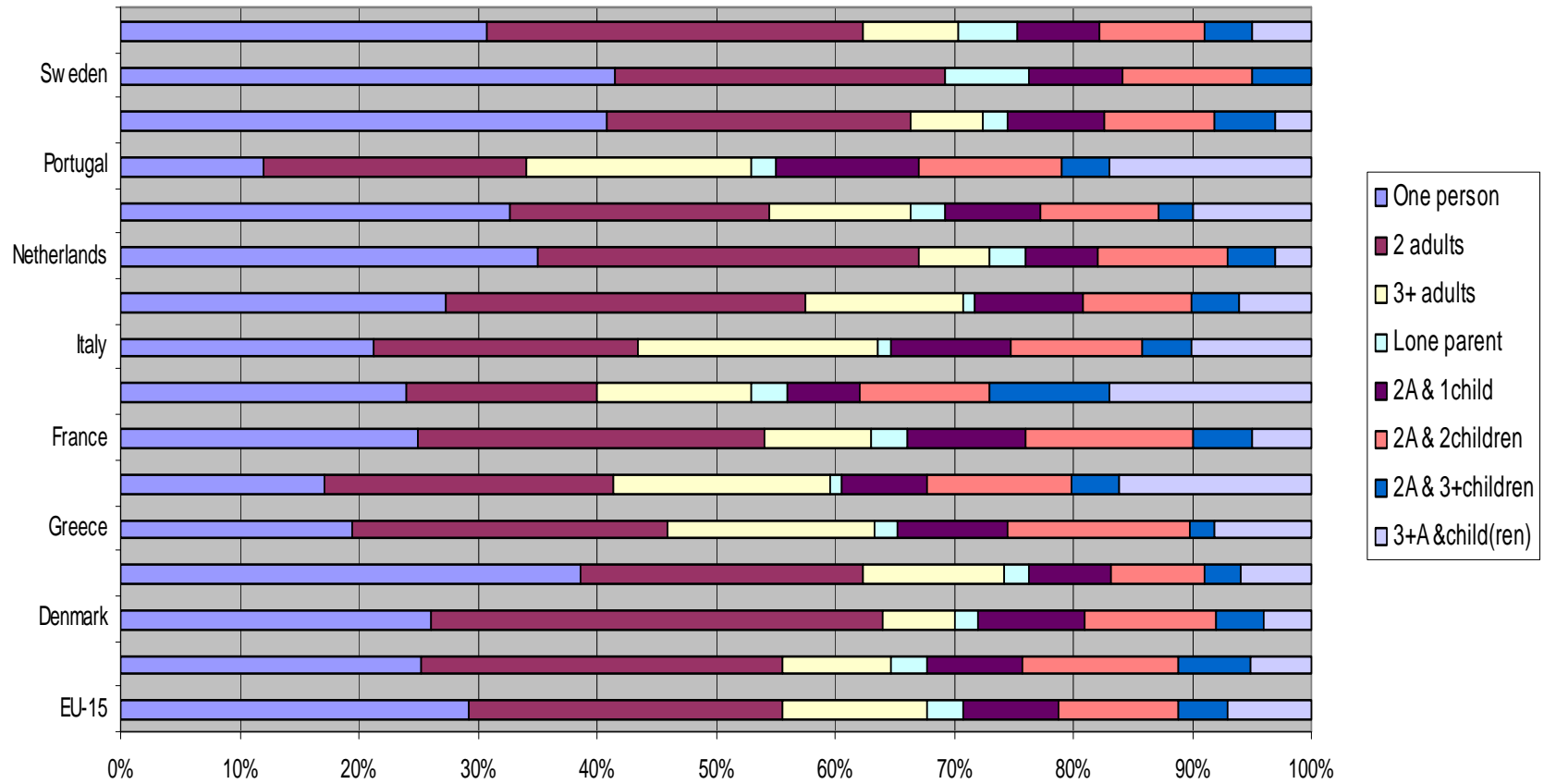


Figure 1
Average household size
EU-15, 2001



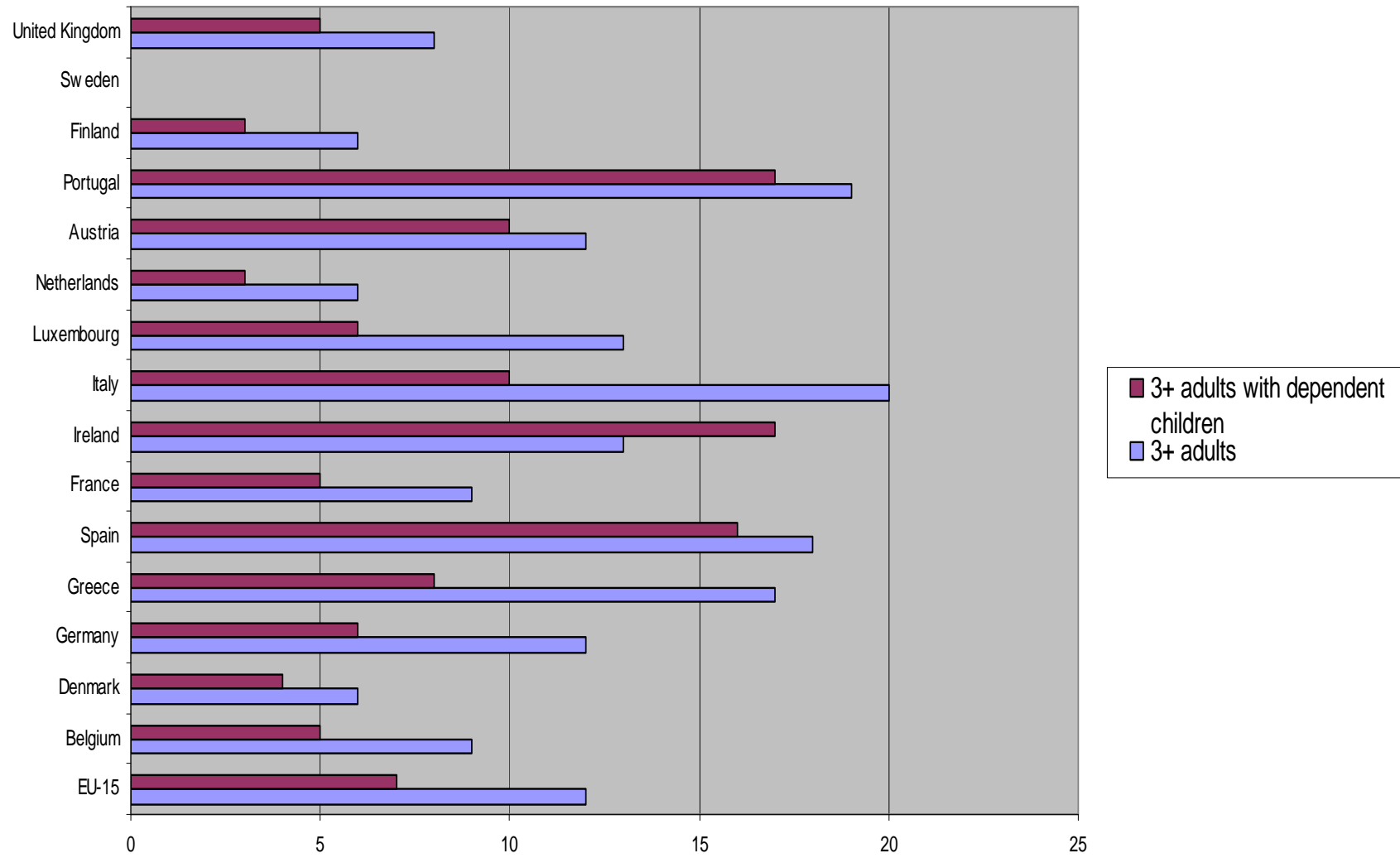
Source: Own elaboration using Eurostat data

Figure 2
Percentage of households by type
EU-15, 2001

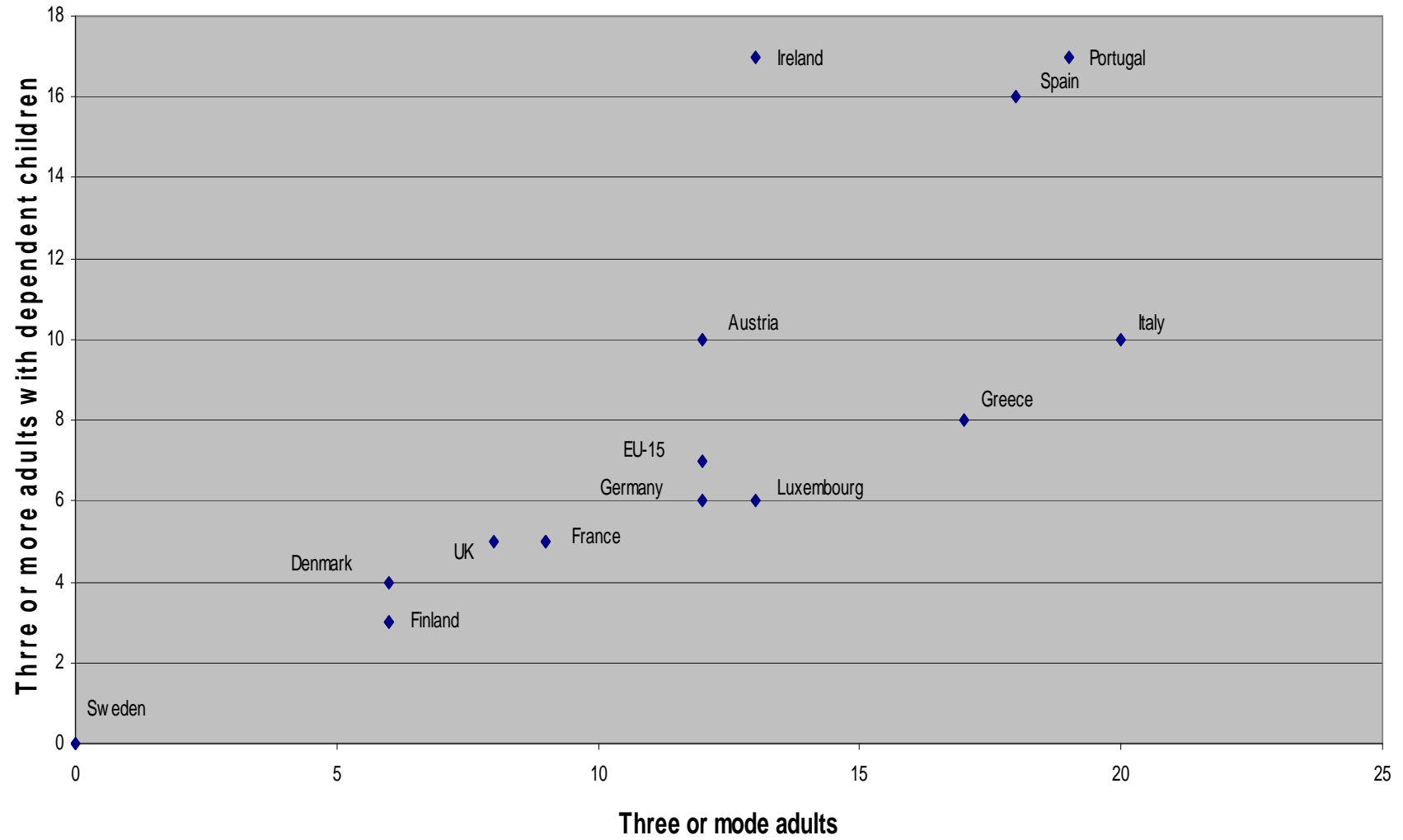


Source: Own elaboration using Eurostat data

Complex family households with or without dependent children EU-15, 2001



Different types of complex households



Percentage of children born outside marriage
EU-15, 1995-2001

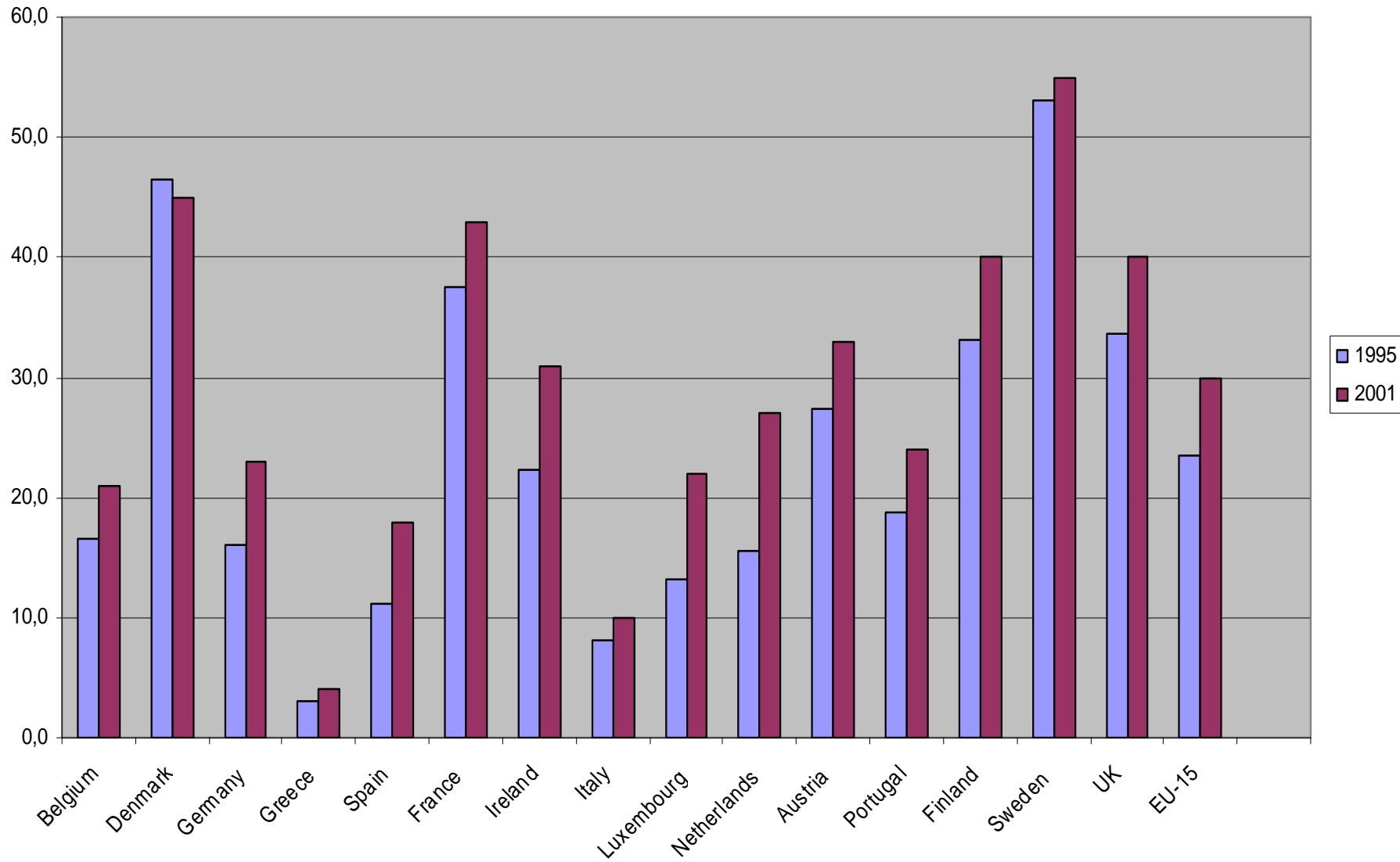


Figure 3
Percentage of children born outside marriage
by the number of divorces per 100 marriages
Selected European countries, 2000

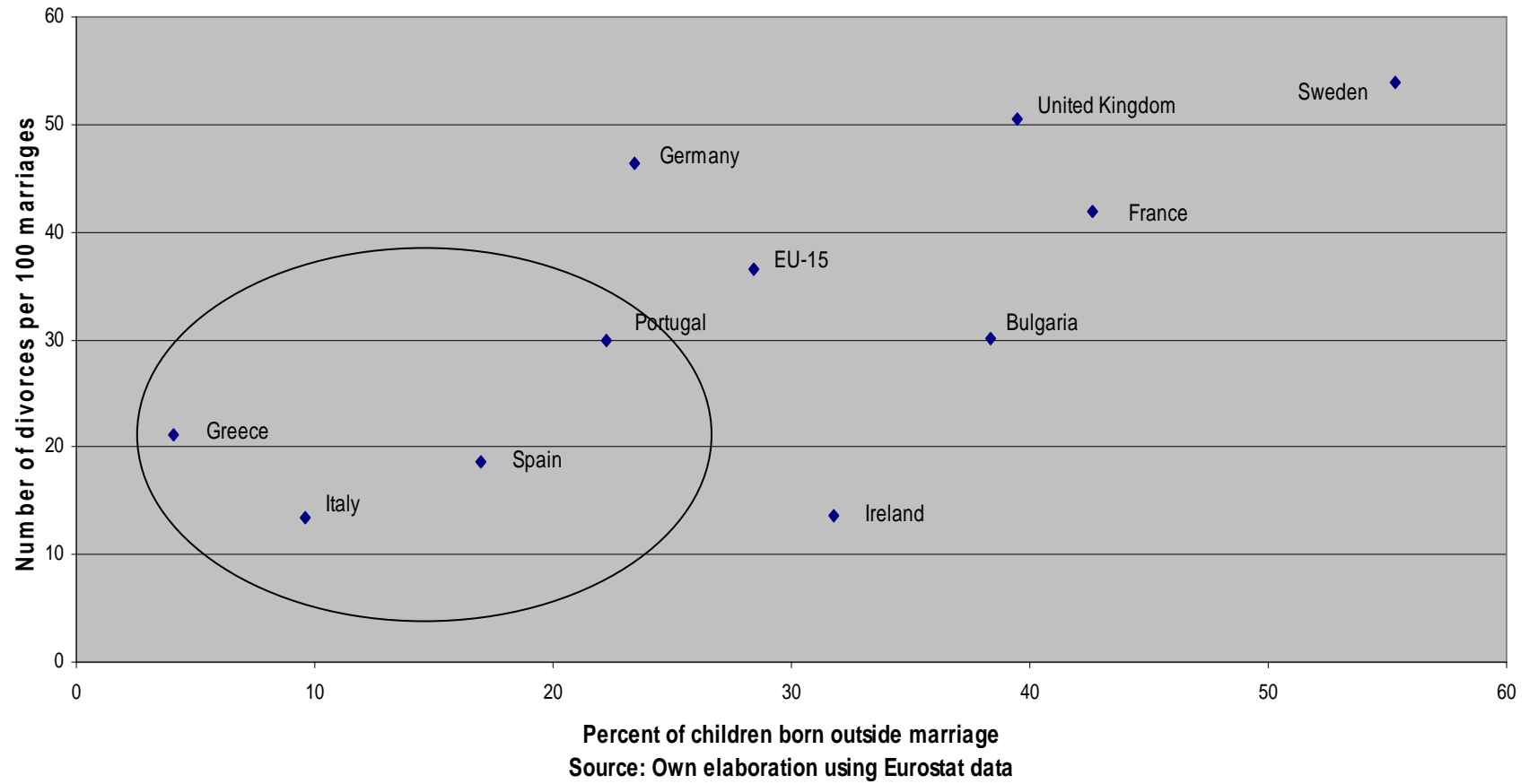
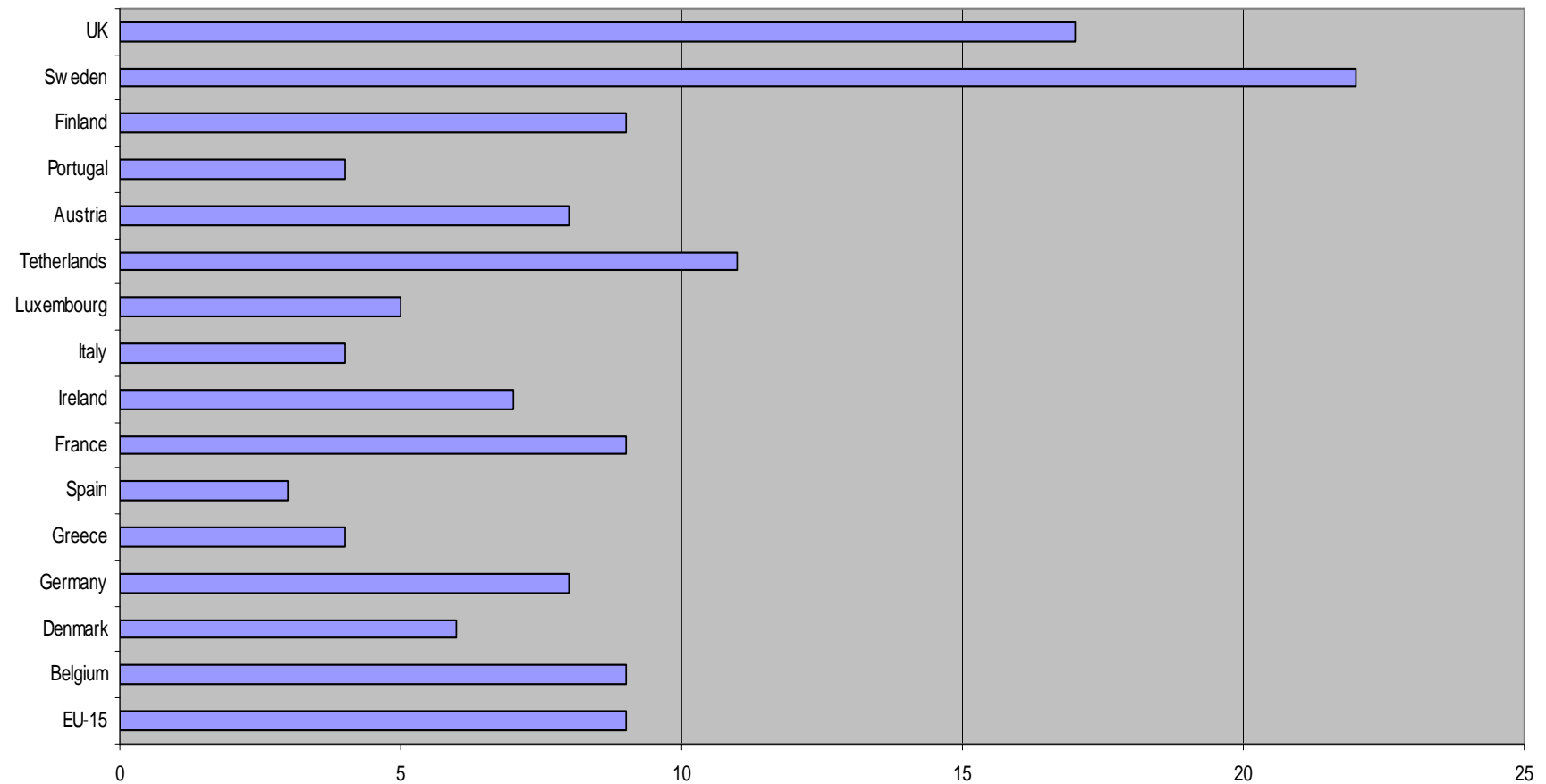
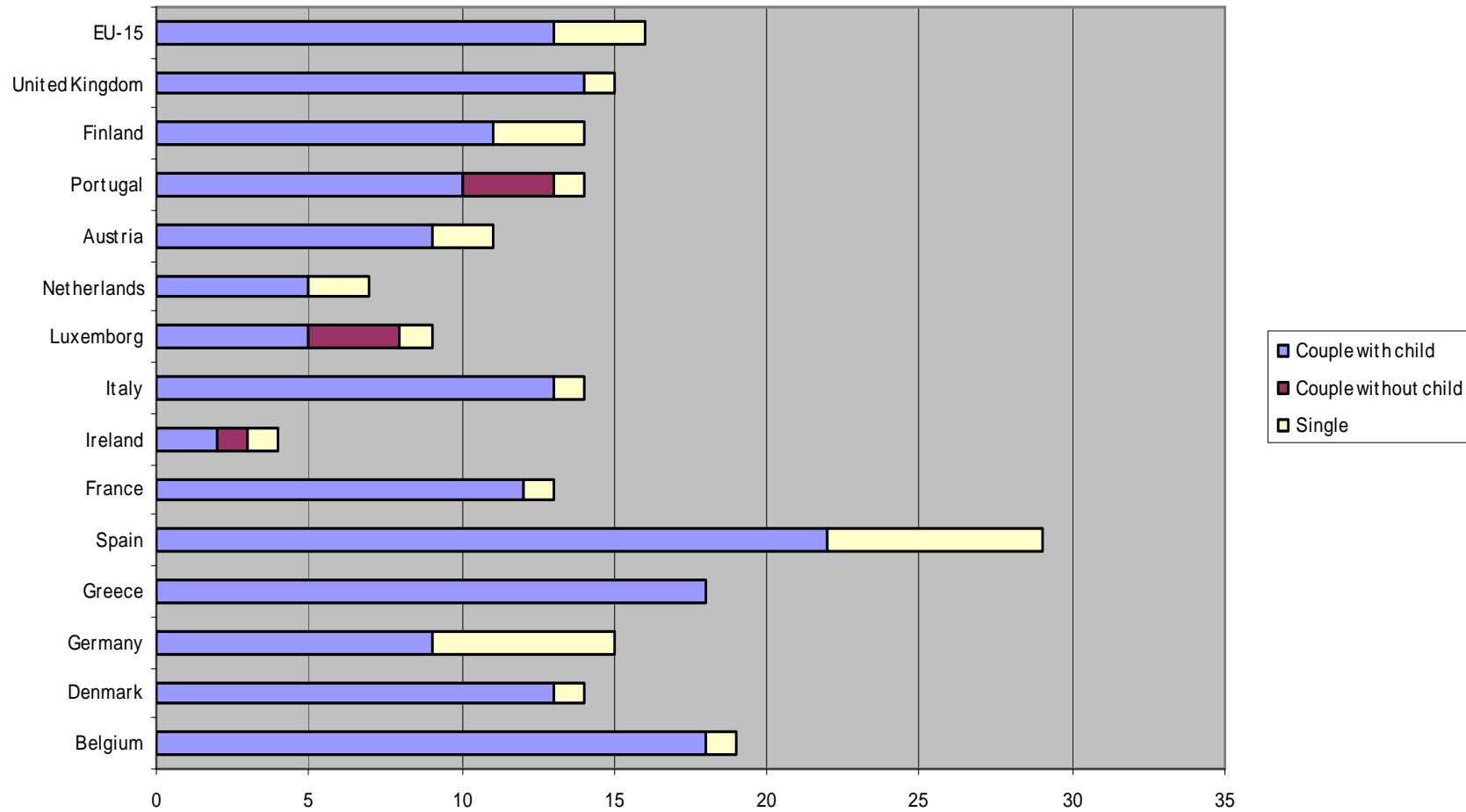


Figure 4
Lone parent households as a percentage of all households with dependent children
European Union, 2001



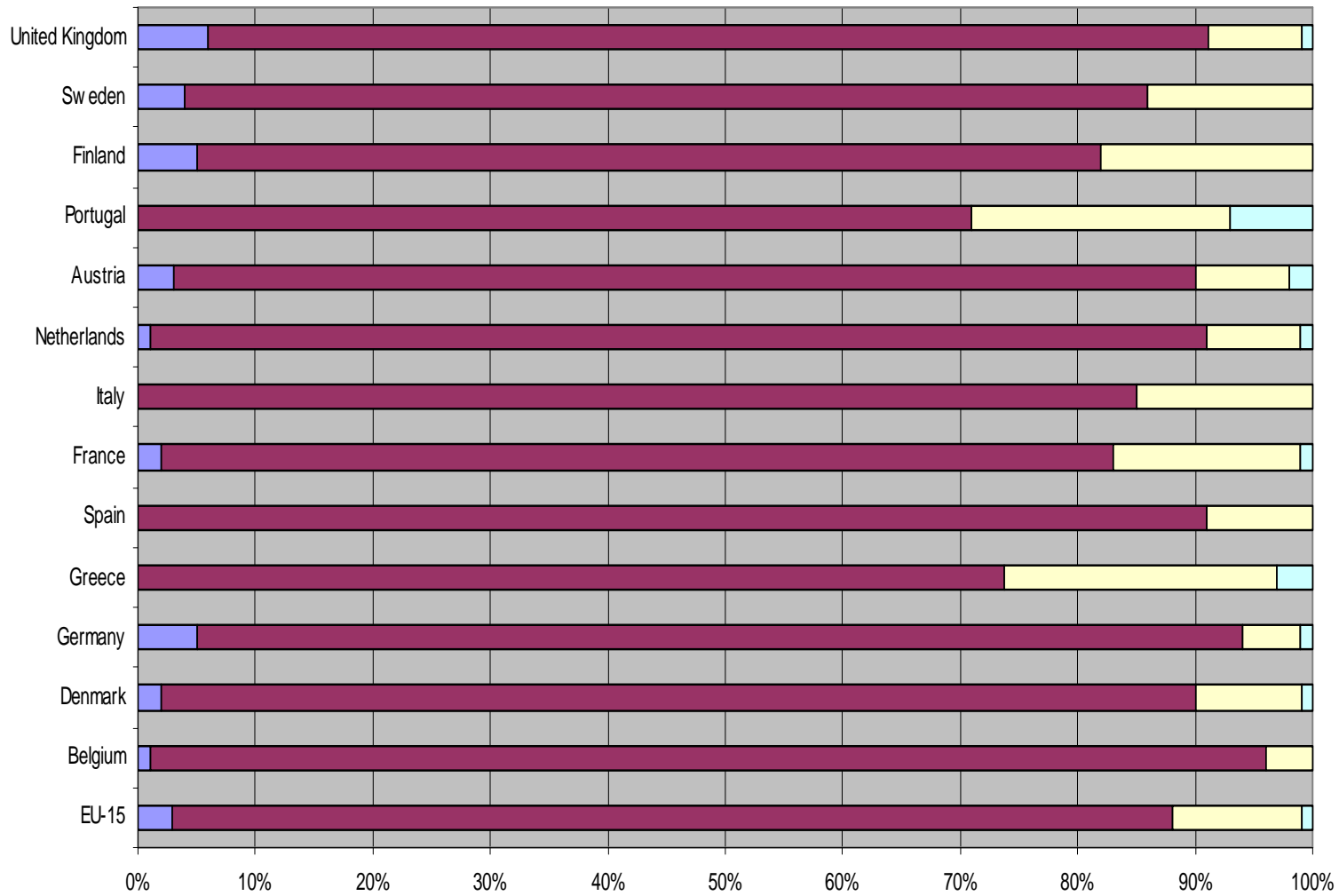
Source: Own elaboration using Eurostat data

**Breakdown of lone parents in current year by situation
in the year before other than lone parenthood
European Union, 2001**



Source: European Community Household Panel

Distribution of lone parents by age group EU-15, 2001



Percentage of lone parents by number of dependent children
EU-15, 2001

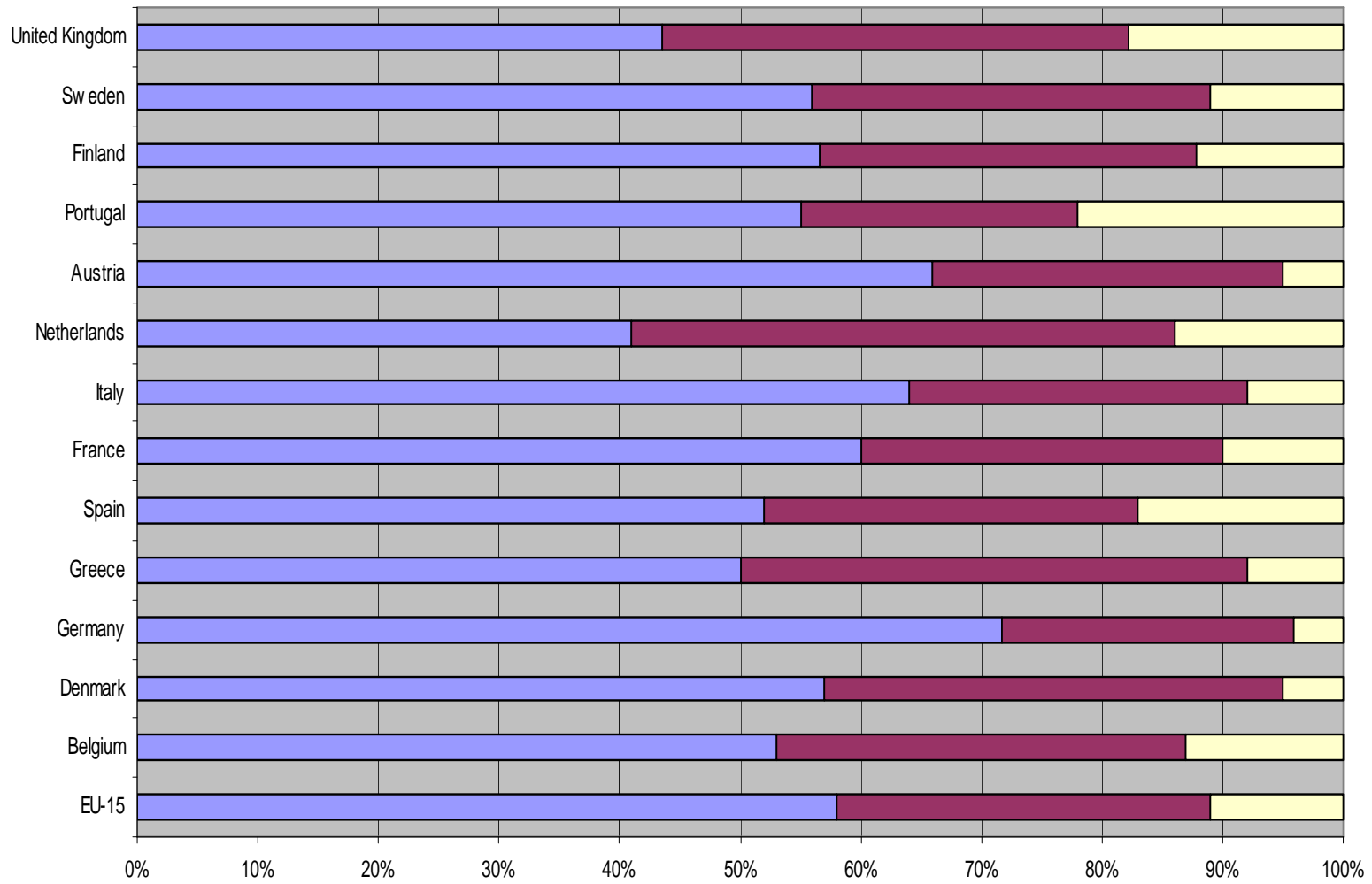


Figure 5

Family models in Europe

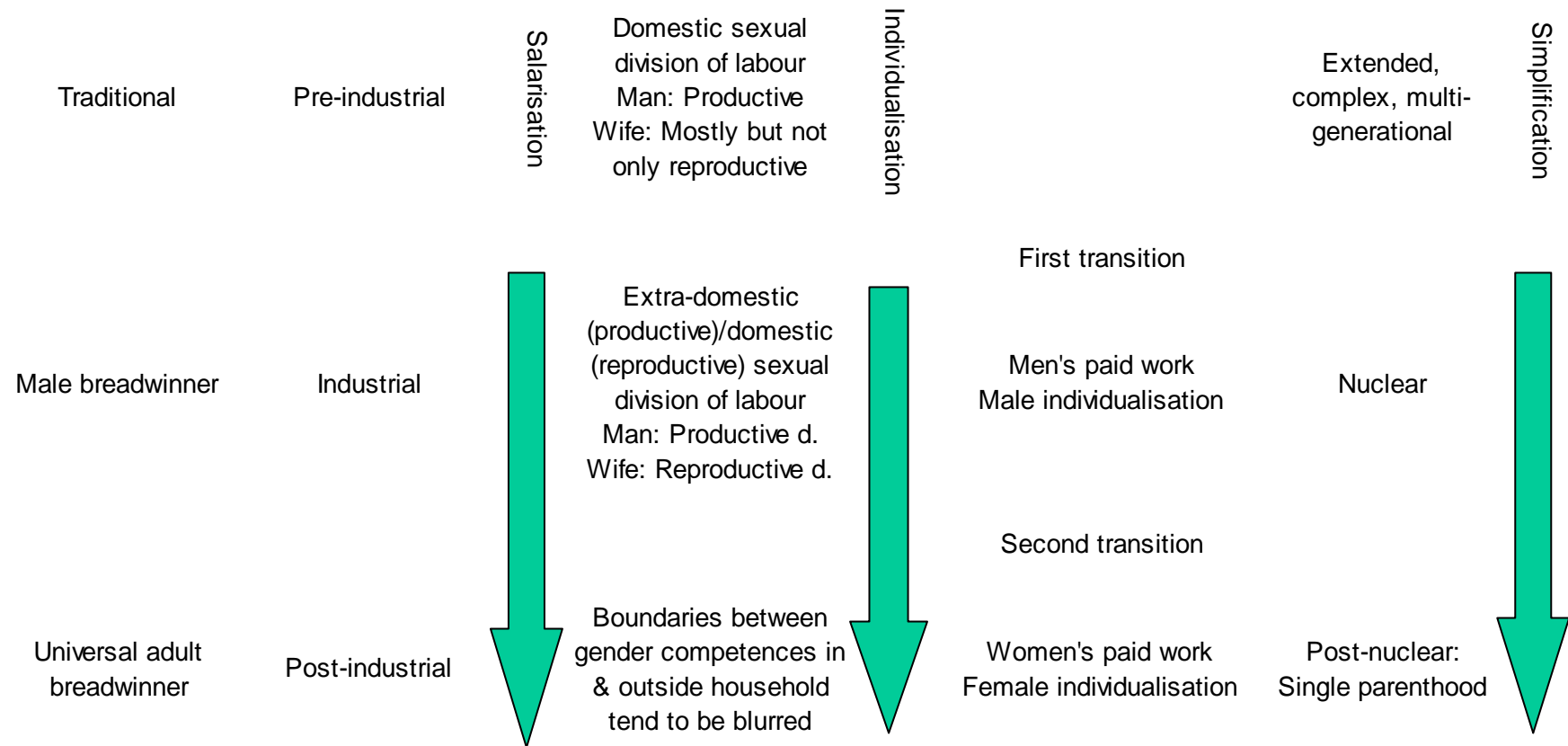
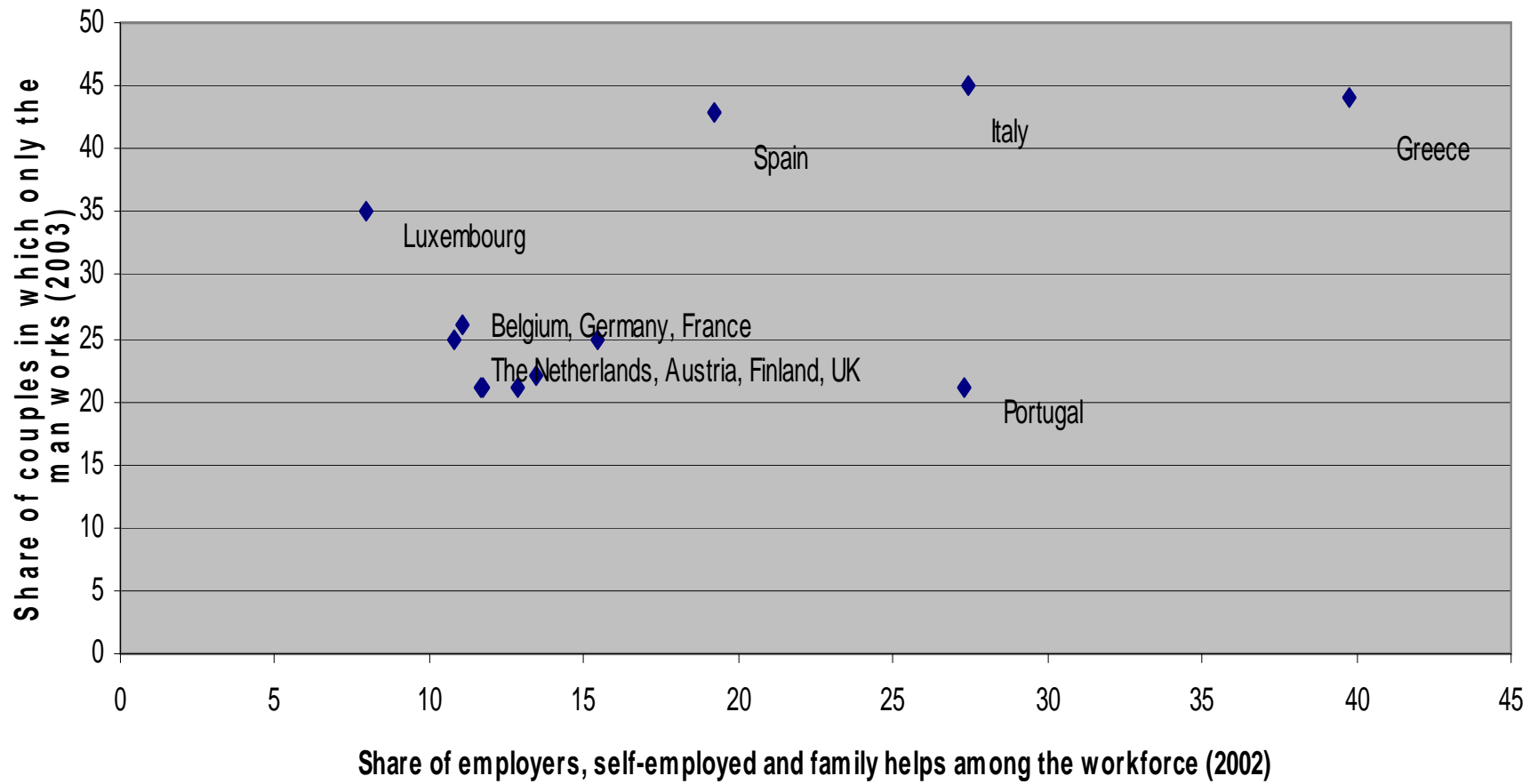


Figure 6

Different kinds of households by various types of family models

Family model	Family forms		
	Extended	Complex	Simple
Traditional	Traditional 1		
Male breadwinner		Two-parent 2	Two-parent 3 One-parent Inactive lone mother 4
Universal adult breadwinner		Two-parent 5	1=1 Two-parent 6 One-parent 7
		One-parent 8	1=1/2 Two-parent 9

Figure 7
Indicators of traditional family forms:
Prevalence of small family business by male breadwinner family model
EU-15, 2002-2003



Source: Own elaboration using Eurostat data

Public social expenditure
FIVE countries, 1980-2001.

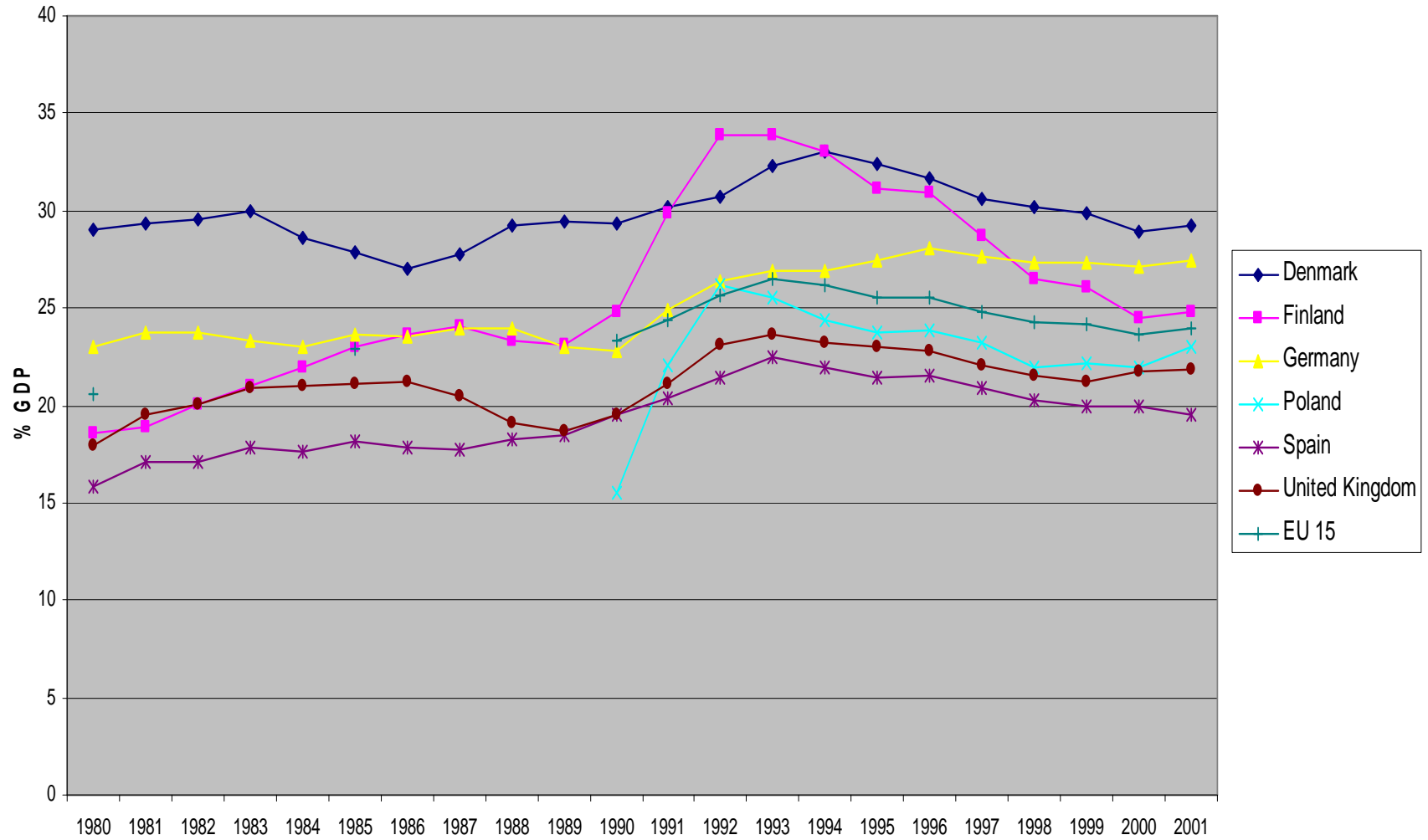
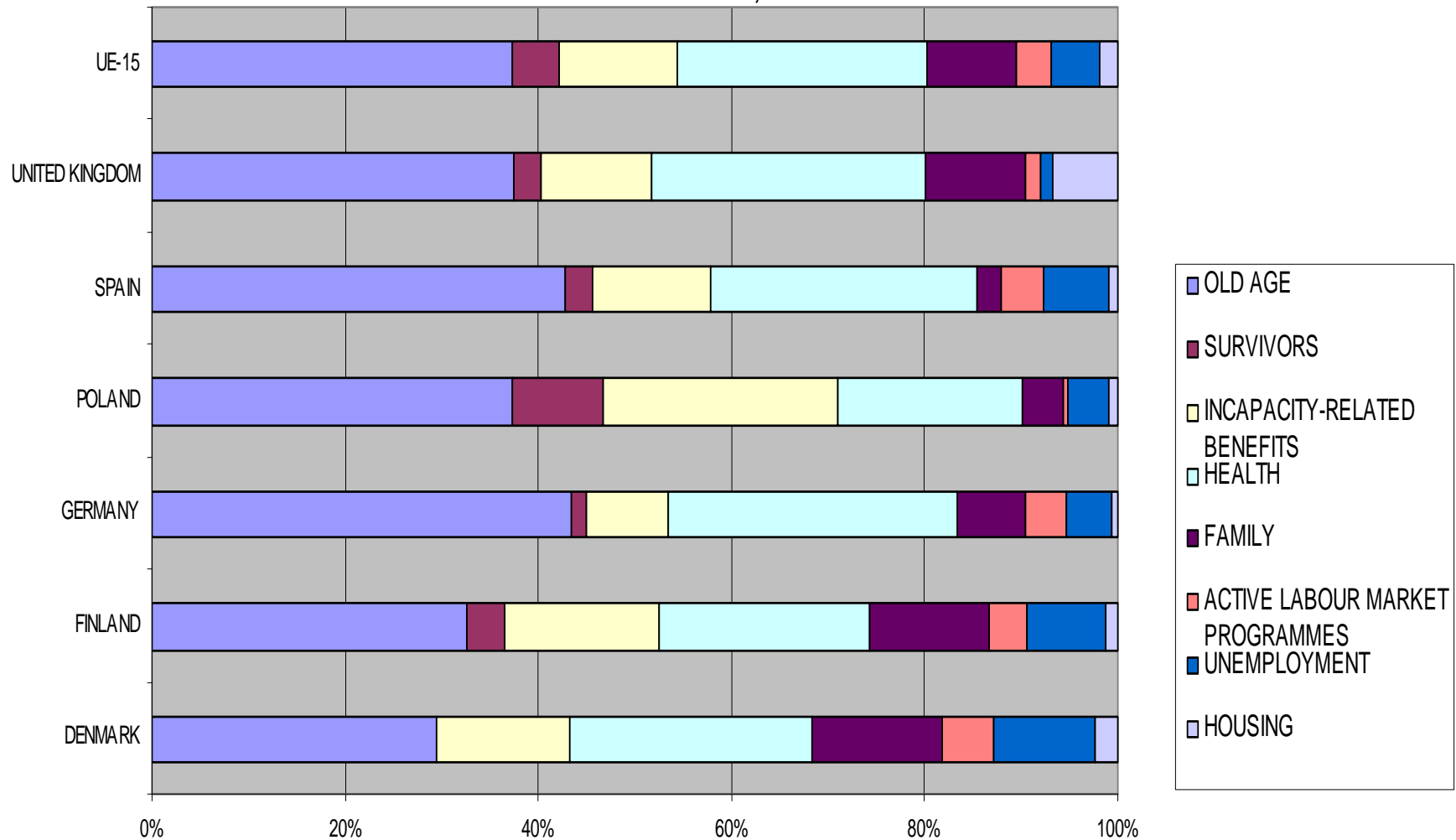
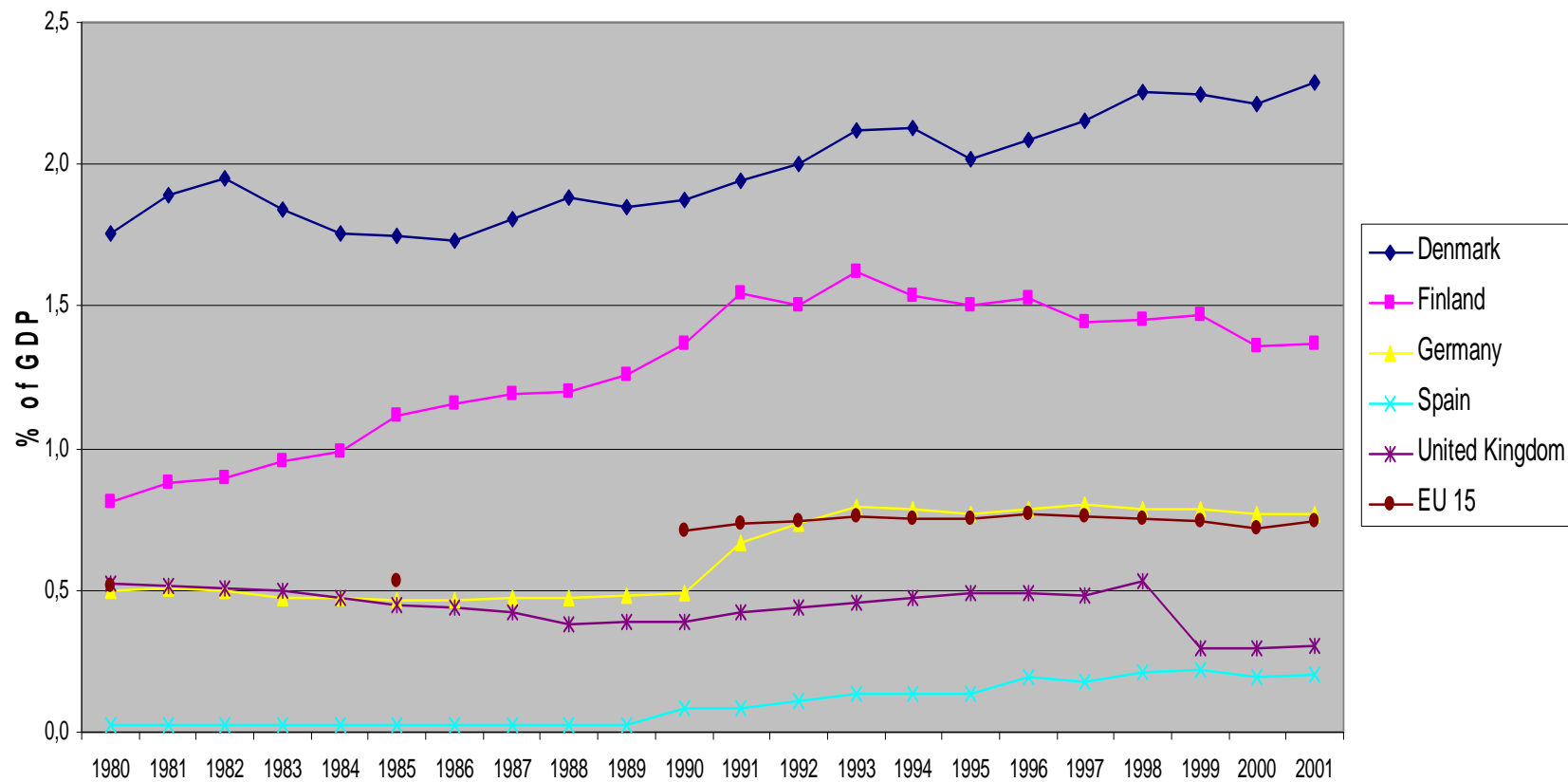


Figure 7
Public social expenditure by main categories
FIVE countries, 2001



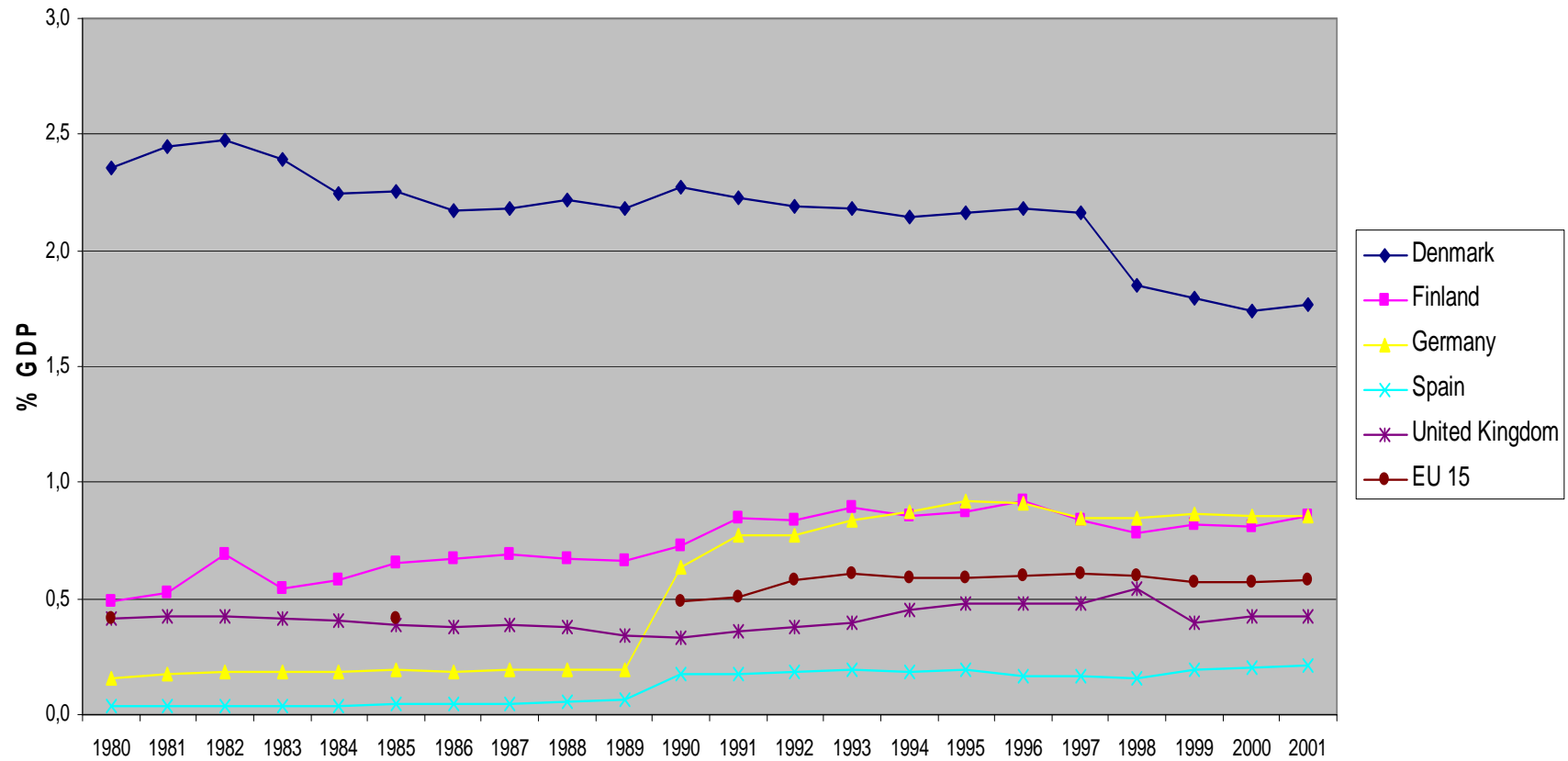
Source: Own elaboration using OECD data (SOCX)

Figure 8
Family benefits in kind
FIWE countries, 1980-2001



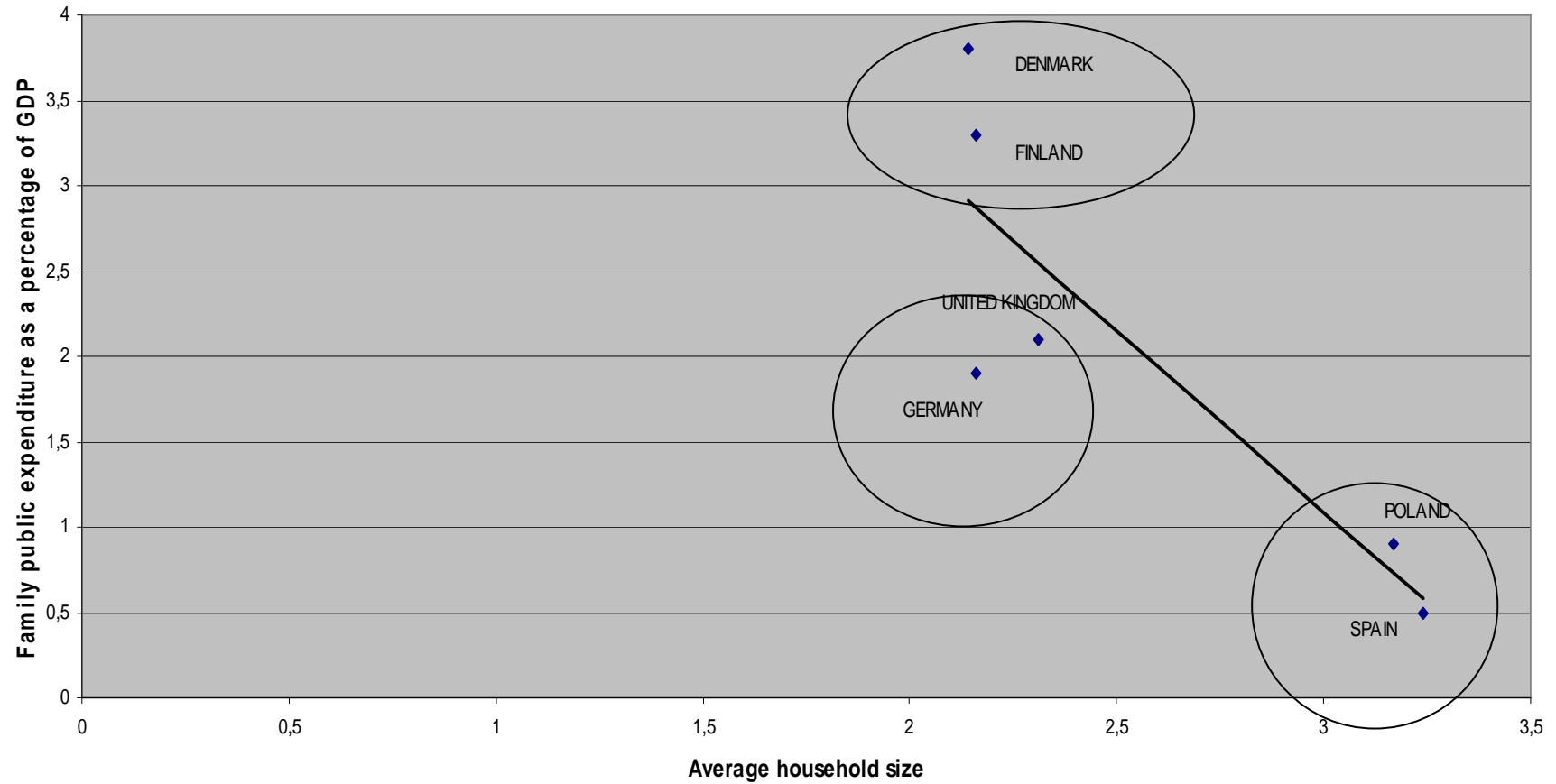
Source: Own elaboration using OECD data (SOCX)

Figure 9
Old age benefits in kind
FIWE countries, 1980-2001



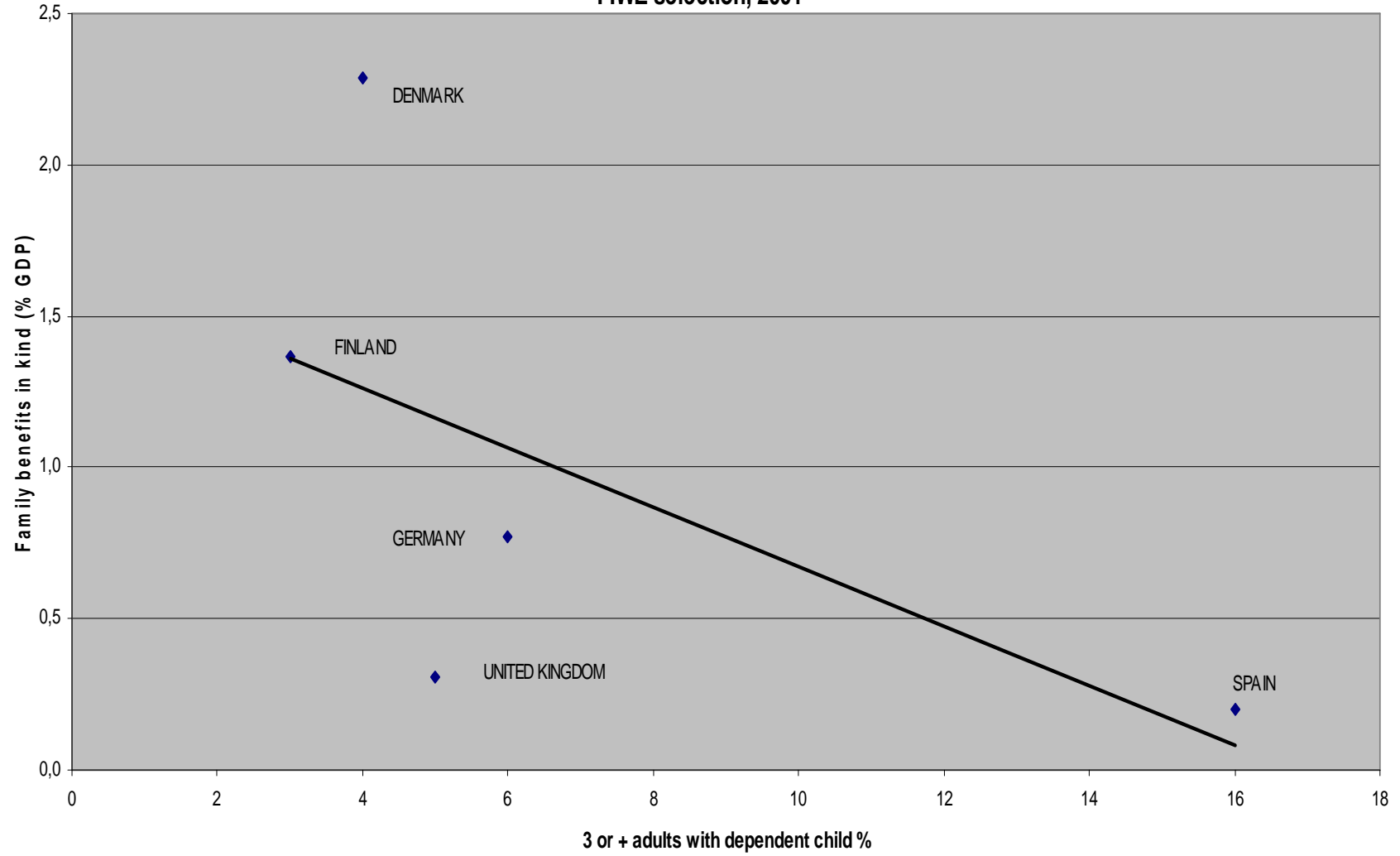
Source: Own elaboration using OECD data (SOCX)

Figure 10
Public expenditure on family cash benefits and services by average household size
FIVE countries, 1999



Source: Own elaboration using OECD and Eurostat data

Complex households 3 or + adults with dependent children by expenditure in family benefits in kind
FIWE selection, 2001



Complex households with 3 or + adults by expenditure of old age benefits in kind
FIWE selection, 2001

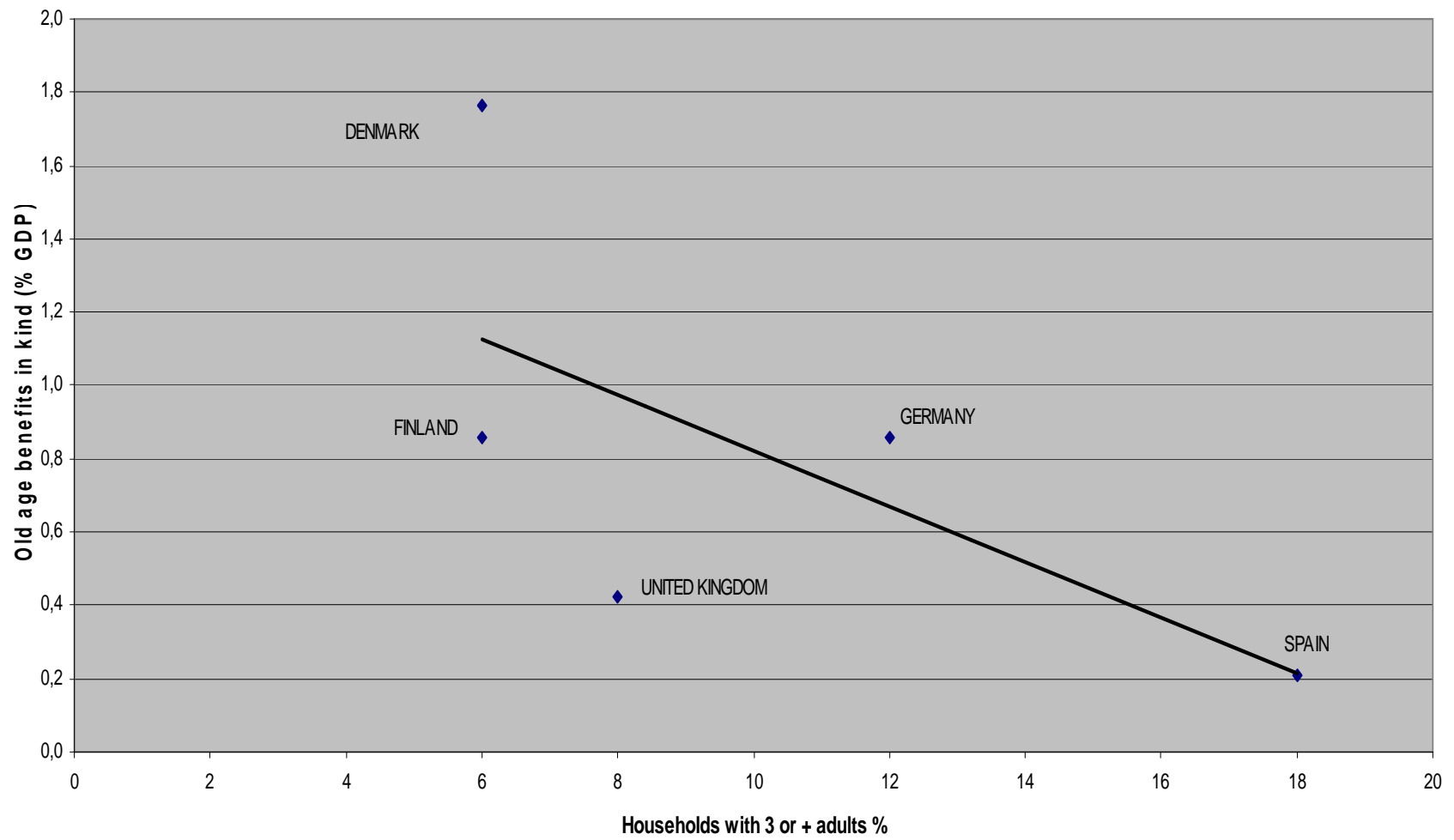
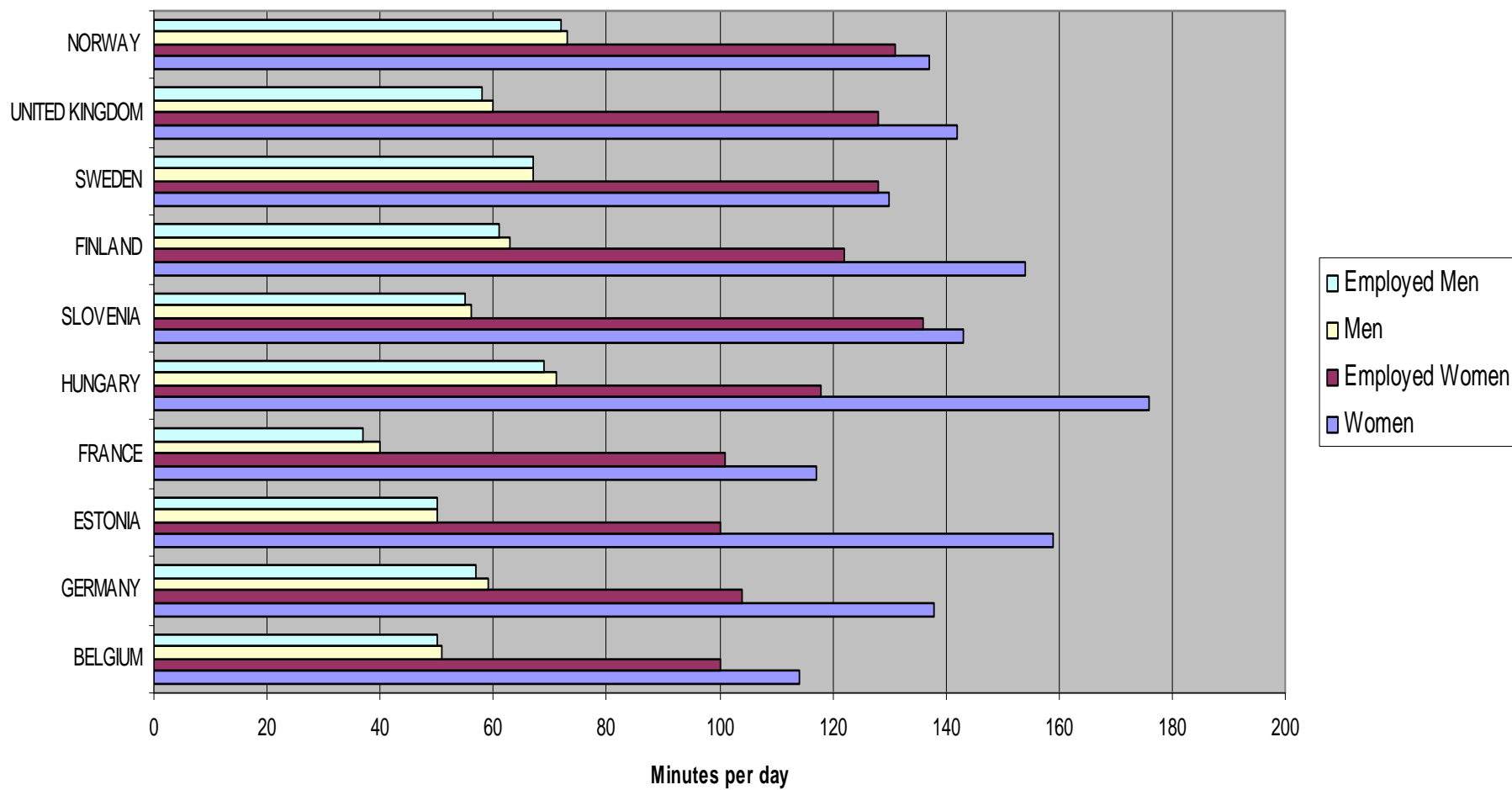
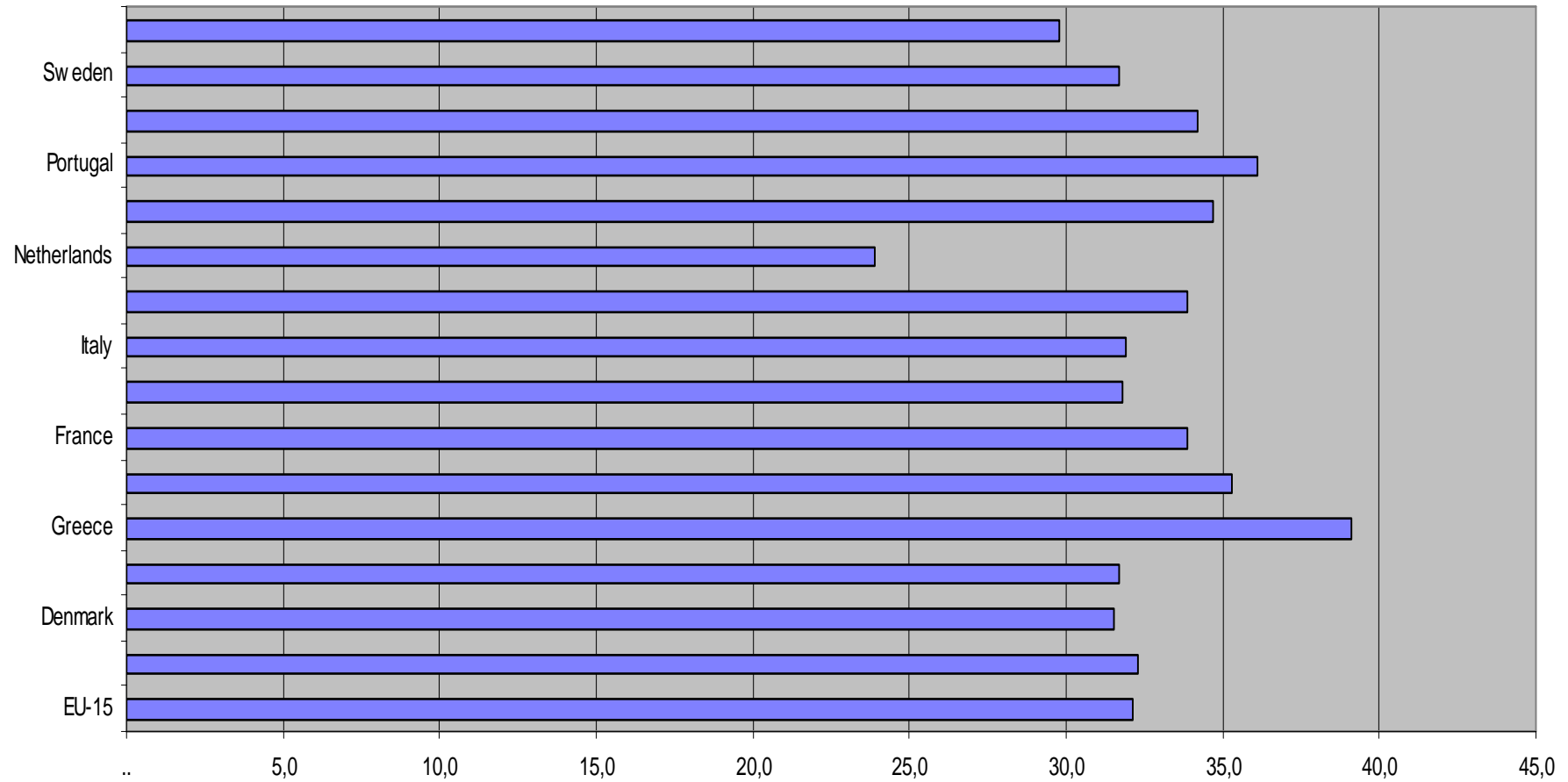


Figure 12
Childcare among parents living as couple with children aged up to 6.
Selection of European countries, 1998-2002



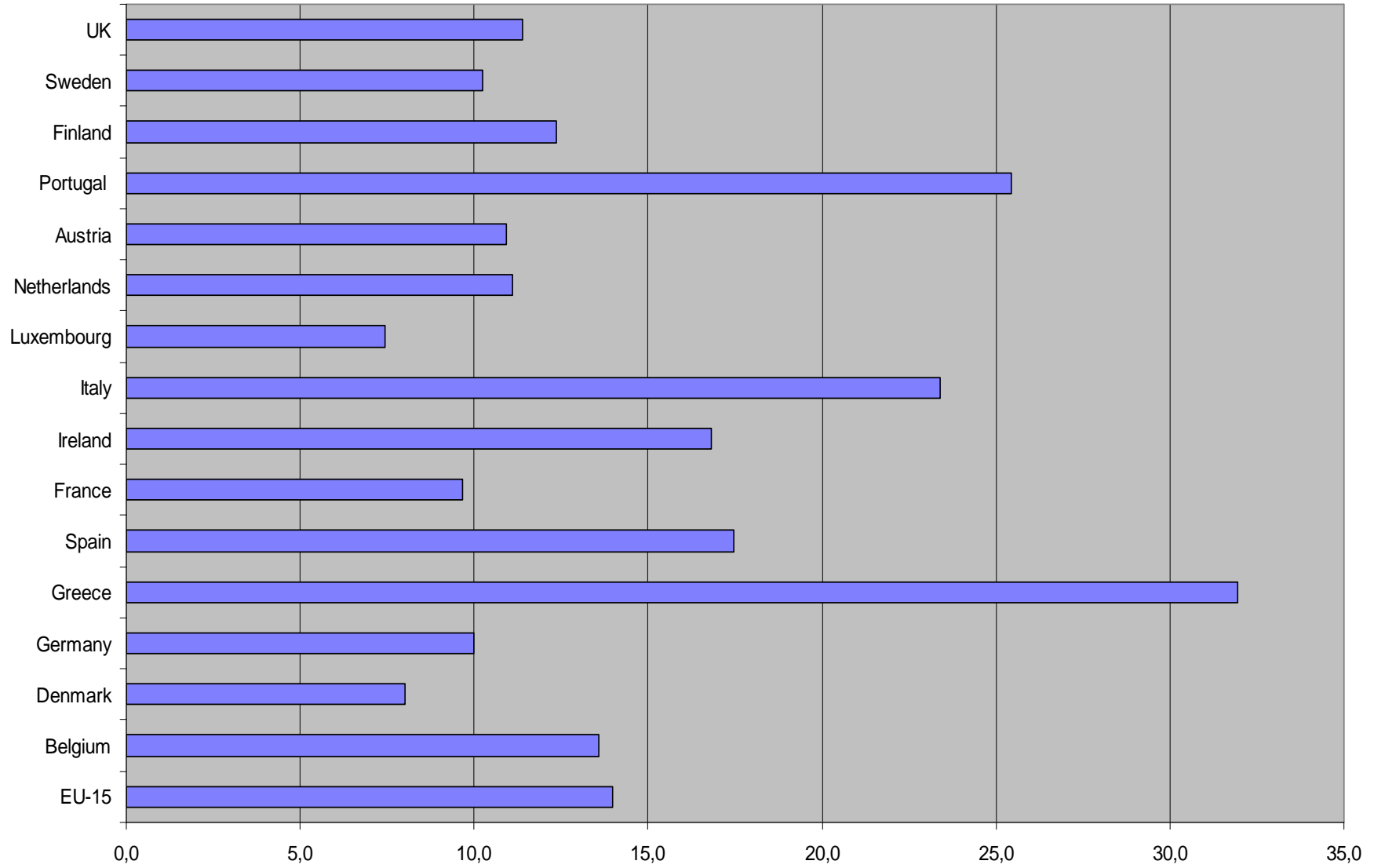
Source: Own elaboration using Eurostat data

Figure 13
Number of weekly hours really worked in main activity by employed women
EU,15, 2002

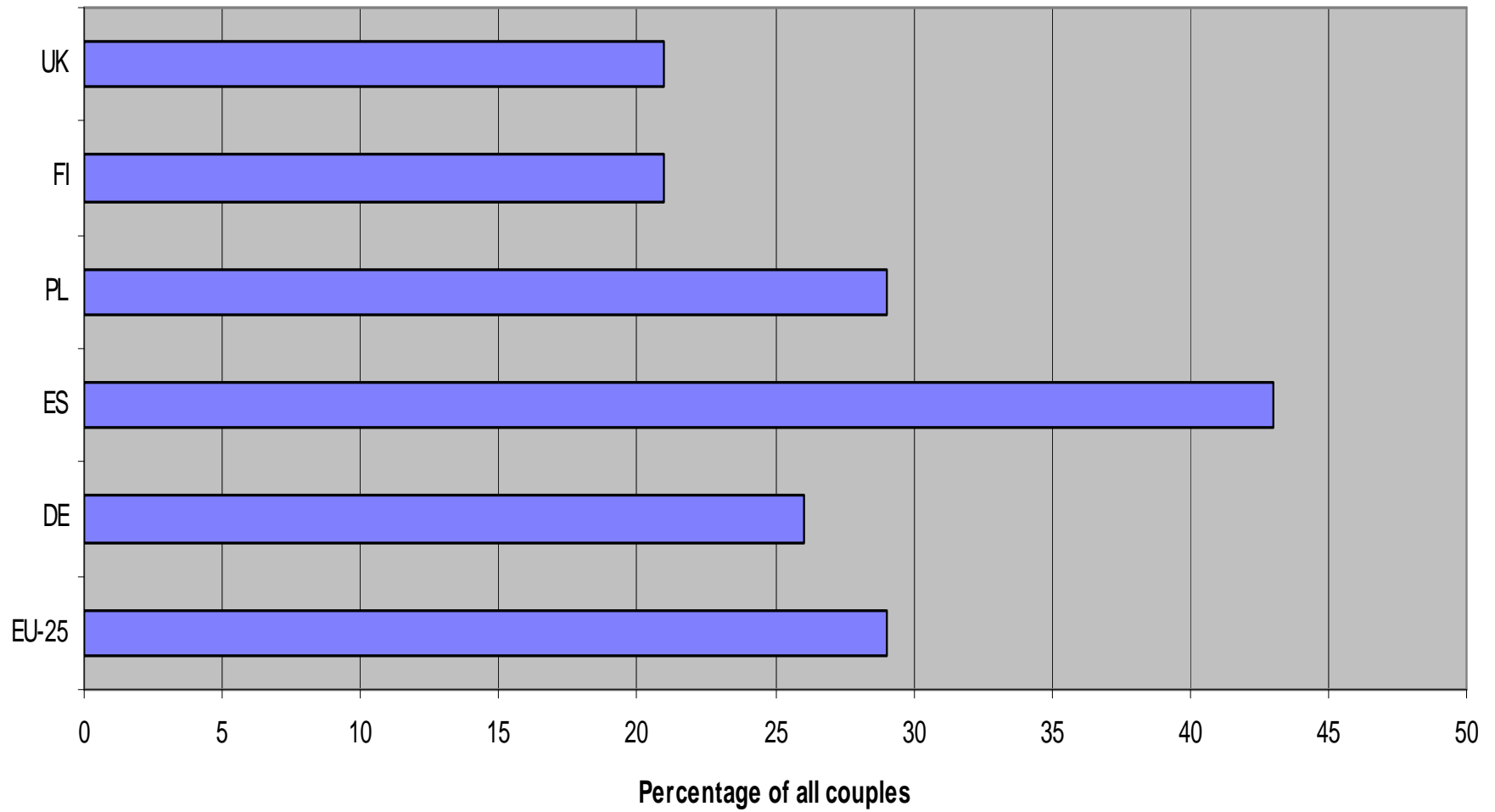


Source: Own elaboration by Eurostat data

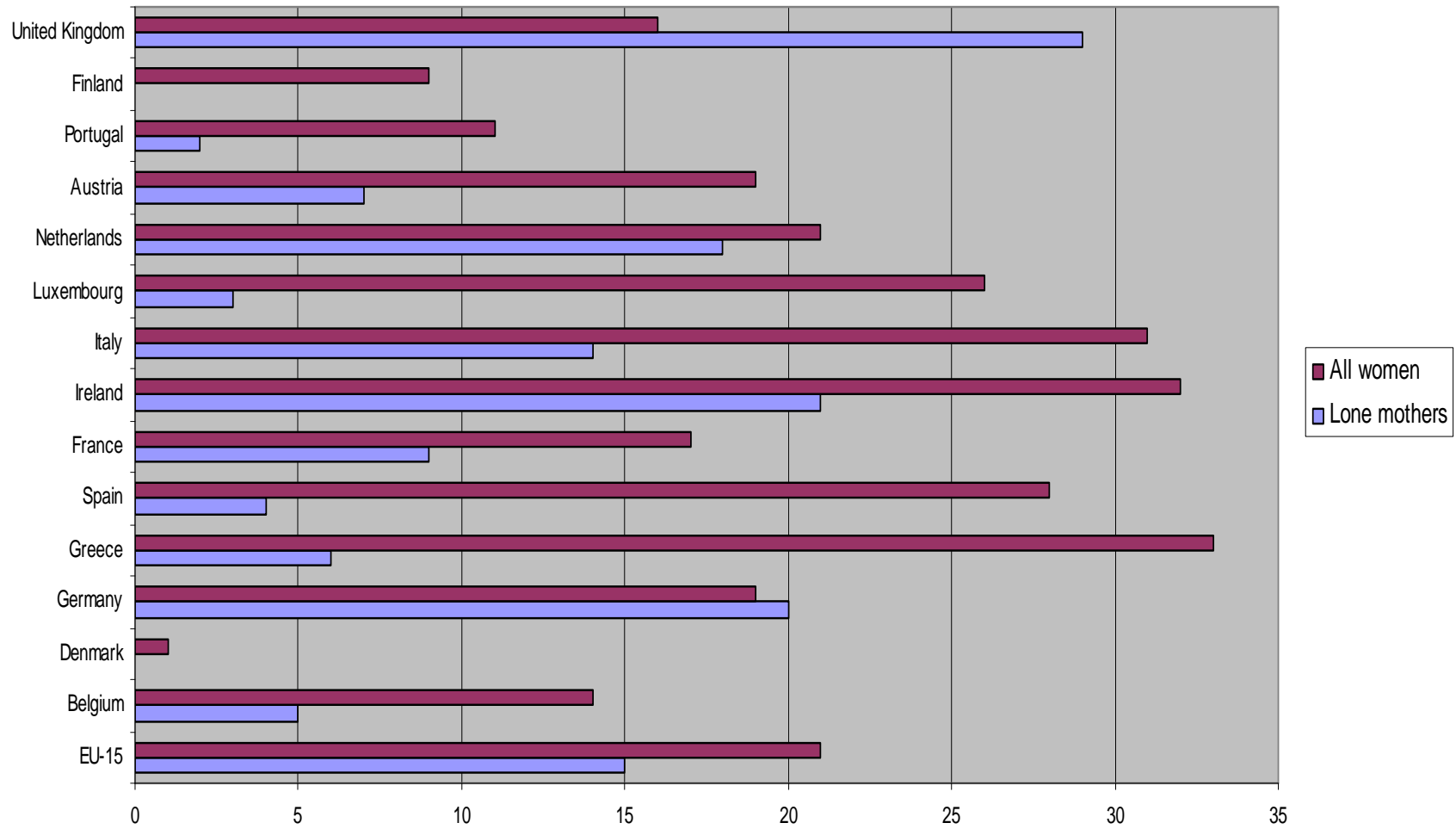
Share of employers and self-employed among the workforce
EU-15, 2002



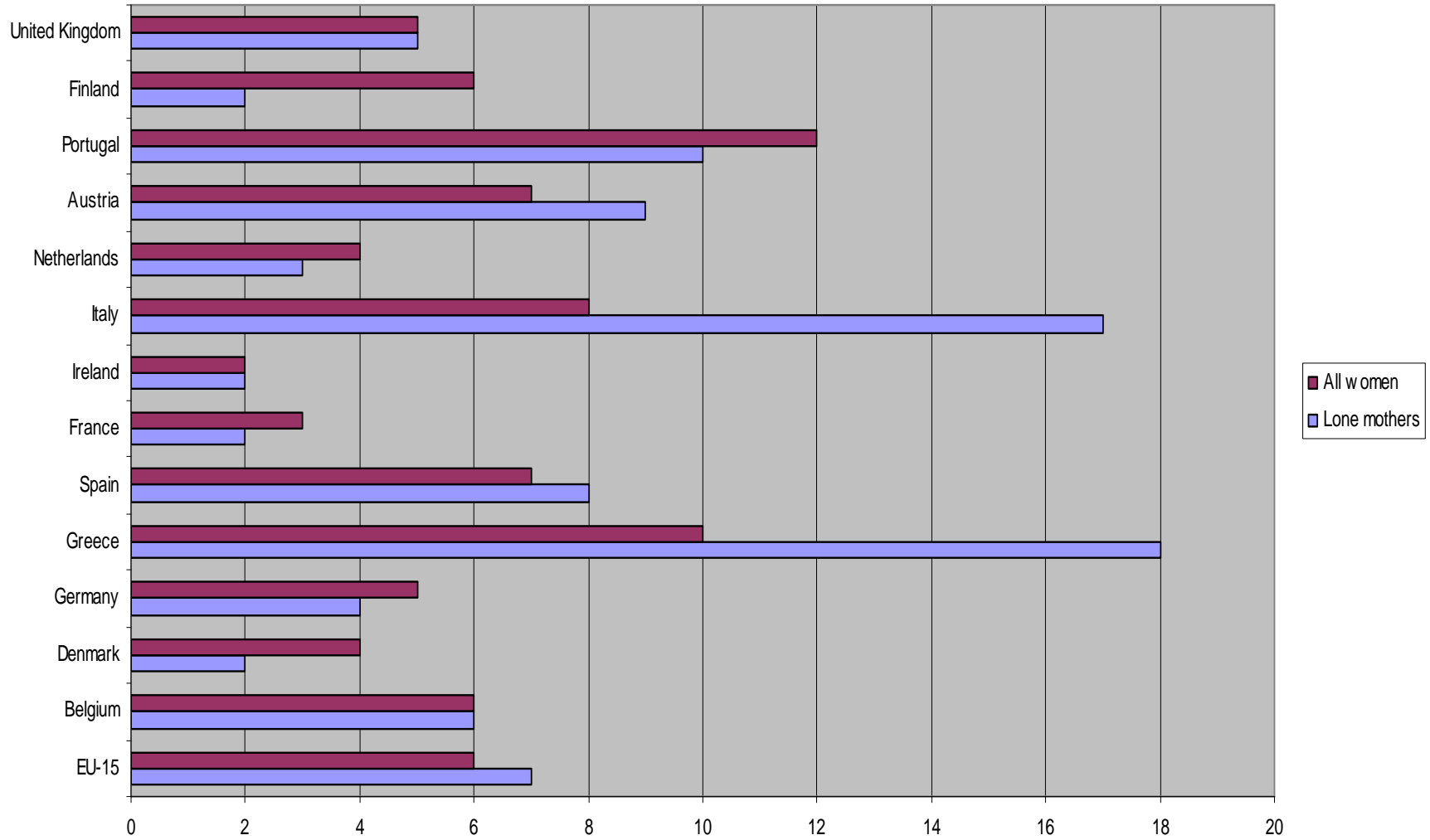
Couples aged 20-49 in which only the man is working
FIWE countries, 2003



Percentage of lone mothers and all women aged 25-49 doing housework,
looking after children or other persons
EU-15, 2001

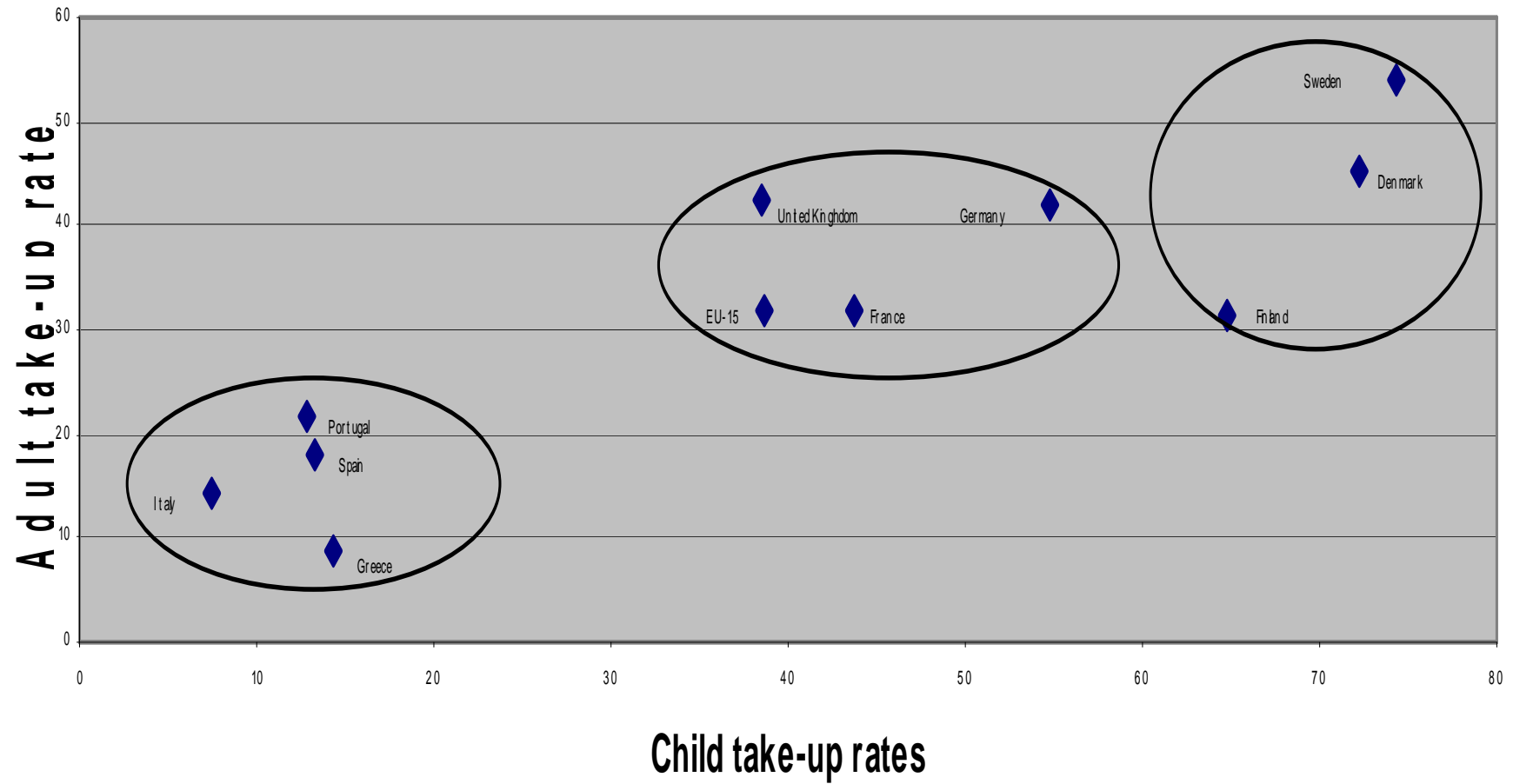


Percentage of self-employed lone mothers and all women aged 25-49
EU-15, 2001



Scattergram of child and adult take-up rates

Selected European countries, 2001



Trade-off between costs and benefits in the Mediterranean model

- Heavy costs of the Mediterranean model in terms of low fertility and low social cohesion.
- However, the fact is that larger sections of the population and in particular middle class women seem to feel comfortable with it, since they have chosen not to mobilise in order to press for more state intervention and social provision in the field of family services

Sustainability of the model and future prospects

- Experts thought that the Mediterranean model would be fading away as the old generation of inactive women (providers of childcare services) were getting frail.
- However, the high demand for family services has been met by an enormous increase of female immigration. This has meant a big boost for the the maintenance of the model

Conclusions

- Private strategies for the reconciliation between work of family life
- Household complexity allows intergenerational exchange of family services in both directions
- The character of these private arrangements depends on the nature of welfare regime