

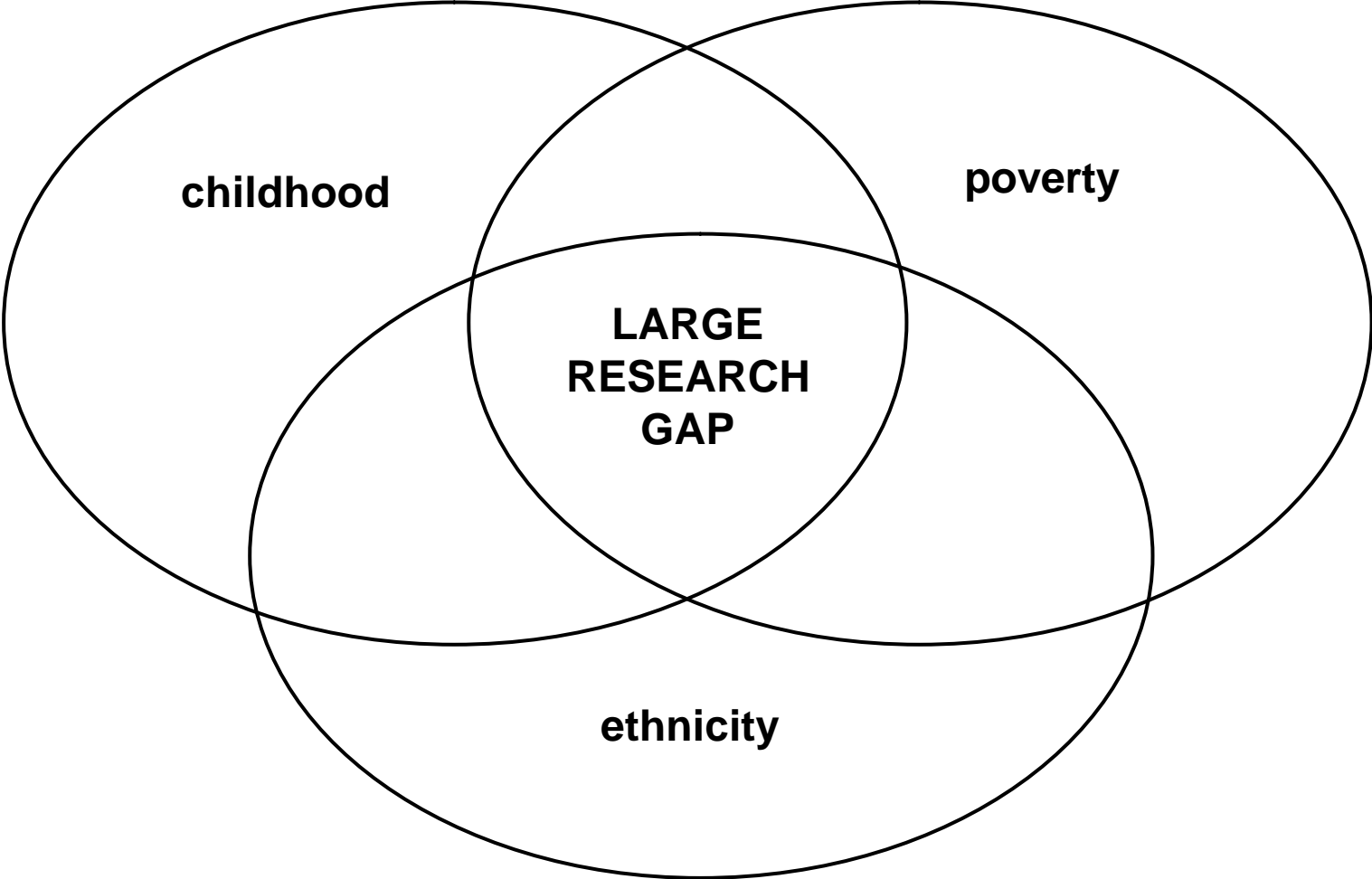
Childhood poverty a disturbing reality

by

Laura Alipranti and Anna Nikolaou, EKKE

Childhood in Poverty

A complicated issue



Why complicated?

- Concepts have multiple meanings and interpretations
- Creating effective indicators accurately measuring a concept
- Developing compatible and comparable indicators
- Methodological deficiencies in large-scale surveys
- Poor immigrant or minority children are invisible social categories that tend to be excluded from the official “count”

Who is at risk?

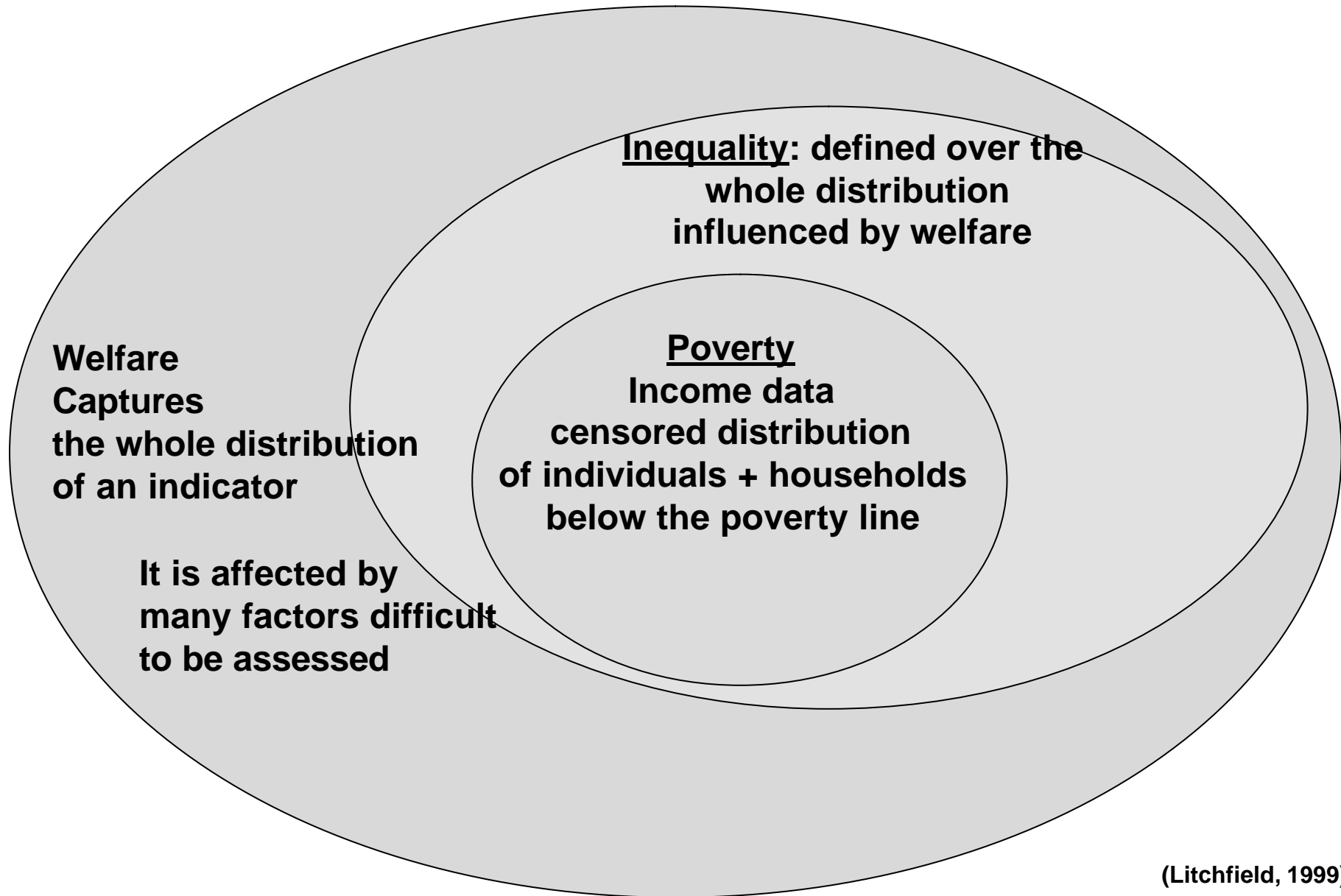
- **The unemployed**
- **Families with ill or disable children**
- **Migrant children**
- **Lone parent families**
- **Families with many children**

What is poverty?

(two economic approaches)

- **Absolute poverty**: insufficient income and resources to ensure what is 'absolutely necessary' for maintaining and reproducing physical strength. → Biological dimension
- **Relative poverty**: insufficient resources that can exclude a person from customs + ordinary standards of living + social activities.
↓
interpreted as inequality

Statistical considerations



Survey of Income and Living conditions - EU-SILC

- **Laeken, December 2001**
 - **endorsed 18 indicators to monitor**
- **Financial poverty**
- **Employment**
- **Education**
- **Health**

Survey of Income and Living conditions - EU-SILC

- **Additional modules (to be agreed)**
 - ethnicity
 - access to essential public or private services
 - social capital
 - inter-generational transmission of poverty (ideally needs cohort study)

Methodological deficiencies in 3 longitudinal studies

NCDS Birth cohort study

Reference week 3-9 March 1958

Strengths:

- Retrospective data
- Job histories
- Health + health behaviour
- covers periods of unemployment
- Provides information about infants and children

Weaknesses:

- Costly type of survey
- Sample attrition
(drop-outs)
- Under-representation
of disadvantaged groups
- no regular follow-ups

(Nathan, 1999:22)

Methodological deficiencies in 3 longitudinal studies

BCS
Birth cohort study



High under representation of

- those whose parents were born outside Britain
- those born to single mothers (above 25% bias)

Strictly lower biases were found for

- those born to teenage mothers
- and unemployed fathers
- whose parents completed education before the age of 15

(Nathan, 1999:22)

Methodological deficiencies in 3 longitudinal studies

BHPS Household Panel study

First sweep carried out in 1991

Strengths:

- Up-to-date sampling frame
- Information about socio-economic changes
- Causal ordering of a range of socio-economic variables
- Facilitates comparisons
- Annual follow-ups
- Minimizing drop-outs
- BHPYS

Weaknesses:

- Over-representation of professionals and self employed

(Nathan, 1999:22)

Millennium Cohort Study

Preliminary findings:

- **Unmarried parenthood was common in disadvantaged wards than in advantaged ones**
- **No co-residential parenthood was more common among those who lived in disadvantage wards and in wards with high minority ethnic populations**
- **15 per cent of children were born to parents who were not living together at the time of birth – mainly mothers with mixed ethnic identity and black mothers declared not-partnered**
- **Teenage pregnancy (14-19 years old) was high among these two wards**
- **Income band ranges from very low (40,3%) to (34,8%) among minority ethnic wards in England**

Source:



Centre for Longitudinal Studies
Bedford Group for Lifecourse & Statistical Studies
Institute of Education, University of London

Household income groups by country and type of ward.

Country and Type of Ward	Income Band				TOTAL (%)	Sample Size (N)
	Very Low * (%)	Low * (%)	Intermediate (%)	High (%)		
England Advantaged	10.0	21.0	34.8	34.2	100.0	4614
England Disadvantaged	27.9	33.9	27.0	11.3	100.0	4514
England Ethnic	40.3	34.8	15.9	9.0	100.0	2384
Wales Advantaged	14.1	22.8	36.5	26.5	100.0	831
Wales Disadvantaged	30.7	35.1	23.2	11.0	100.0	1927
Scotland Advantaged	12.0	22.9	32.6	32.5	100.0	1142
Scotland Disadvantaged	29.1	30.7	25.8	14.4	100.0	1188
NI Advantaged	11.7	20.7	37.7	29.8	100.0	722
NI Disadvantaged	30.6	36.8	22.7	9.9	100.0	1194
Total Sample Size						16600

Sample: All MCS main respondents. * These groupings are not based on any official definitions of low income or poverty

Source:

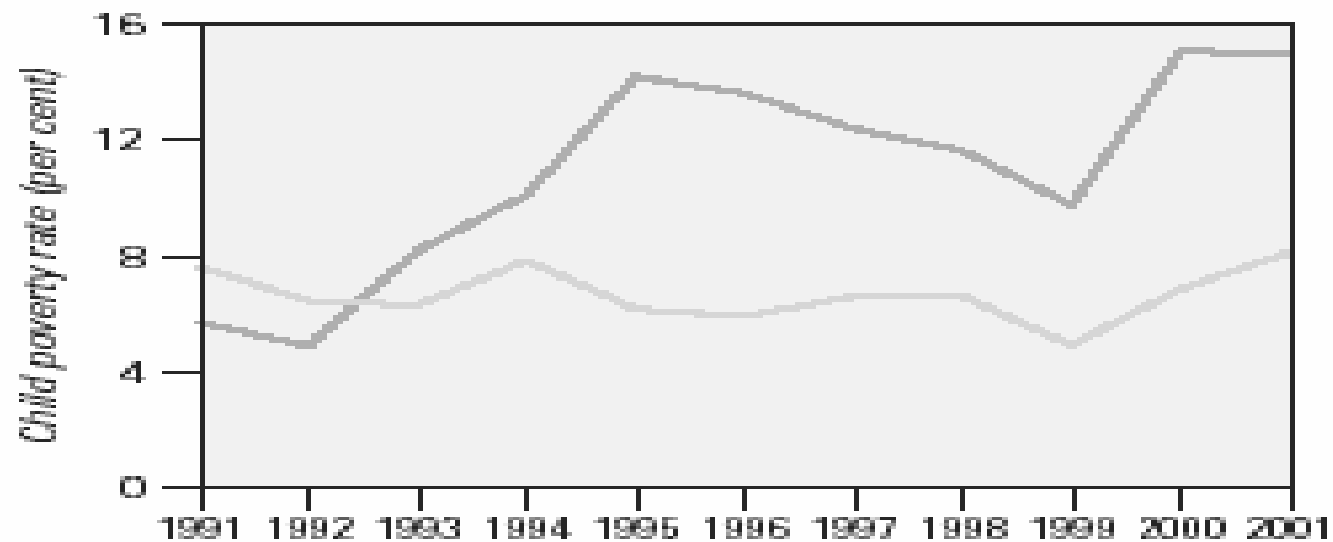


Centre for Longitudinal Studies

Bedford Group for Lifecourse & Statistical Studies
Institute of Education, University of London

Poverty and citizenship status in Germany

The pale blue line tracks the change in the child poverty rate for children living in households headed by German citizens during the 1990s. The dark blue line tracks the change for children living in households headed by non-citizens.



Source:



Innocenti Working Paper
2005-03

Greece a problematic case

- Lack of formal data and figures related to
 - retrospective data (family, employment and immigration histories)
 - demographic characteristics and processes of the immigrant population (i.e. fertility, mortality, household and family structure)
- No official statistics available for ethnic minorities
- Few datasets available for secondary analysis



WWW.GREEKLANDSCAPES.COM
SATELLITE IMAGE COURTESY OF WWW.VISIBLEEARTH.NASA.GOV

**Number and percentages of minority students
in Rhodope and Xanthi – 1996/7**

Prefectures	Number of minority children in primary education	%	Number of minority children in secondary education	%
Rhodope	3.710	53%	511	12%
Xanthi	3.753	44%	886	13%
Total	7.463	48%	1.397	12,5%

Source: Ministry of National Education (????T), 1998, Katsikas and Politou, 1999

Research literature gap is related to

- **immigrant or minority children tend to be ignored by large-scale studies**
- **focus of study**
- **the validity or lack of indicators measuring particular concepts**
- **information accuracy related to time of data collection**
- **insufficient information about access to community resources and public services**